

www.eirias.co.uk

YSGOL EIRIAS
**SIXTH FORM PROSPECTUS /
PROSPECTWS Y CHWECHED DOSBARTH**





WELCOME TO YSGOL EIRIAS SIXTH FORM

Ysgol Eirias inspires its students to challenge their learning and demand the most from their skills and talents. The school has a proud reputation for academic excellence that regularly sees it feature as one of the top performing Sixth Forms in England and Wales.

Indeed we were recently included in the Sunday Times list of the top 10 schools in Wales for A level and GCSE results. Eirias is a richly resourced school set in a beautiful location that complements the vast array of curricular and extra-curricular opportunities.

We are proud of our Welsh identity and recognise that the school now needs to prepare young people to compete in an increasingly competitive international scene. The combination of culture, challenge and innovation aims to give all of the students a fantastic launch into the next stage of their life.

Sarah Sutton
Headteacher



I hope that you will find what you are looking for in this guide. We know that decisions about your Sixth Form education are not easy and most people need reassurance about their choices and the implications for the future.

We aim to help all students find the best courses for their particular needs. Check the option blocks to see what combinations are possible. These have been arranged to suit the majority and are not likely to change unless there are exceptional circumstances. If you find that you have a clash of subjects in your options, we may be able to resolve it by talking over the possibilities with you.

Please do not hesitate to ask for whatever guidance you need and look on the school website www.eirias.co.uk for additional information.

Sean Gavin
Head of Sixth Form



CONTENTS / CYNNWYS

INTRODUCTION AND WELCOME	02	DESIGN AND TECHNOLOGY	14	MEDIA STUDIES	21
CURRICULUM ENRICHMENT	04	DRAMA AND THEATRE STUDIES	15	MEDICAL SCIENCE	21
QUESTIONS AND ANSWERS	06	ECONOMICS	15	MODERN FOREIGN LANGUAGES	22
OTHER INFORMATION	08	ENGLISH LANGUAGE	16	MUSIC	22
ADVANCED SKILLS CHALLENGE	10	ENGLISH LITERATURE	16	PHILOSOPHY AND ETHICS	23
CERTIFICATE		ENVIRONMENTAL SCIENCE	17	PHYSICS	23
APPLIED BUSINESS STUDIES	11	FINANCIAL STUDIES	17	SOCIOLOGY	24
ART AND DESIGN	11	GEOGRAPHY	18	SPORT	24
BIOLOGY	12	HEALTH AND SOCIAL CARE	18	TOURISM	25
BUSINESS STUDIES	12	HISTORY	19	LINC COURSES	25
CHEMISTRY	13	ICT	19	WHAT STUDENTS THINK	26
COMPUTER SCIENCE	13	MATHEMATICS	20	SUBJECTS FOR DEGREE COURSES	28
CYMRAEG AIL IAITH	14	FURTHER MATHEMATICS	20	NOTES	30



CURRICULUM ENRICHMENT / CYFOETHOGI'R CWRICWLWM

The Sixth Form area offers spacious, modern study and recreational facilities. We are an integral part of the school, but the Common Room and the Resource Base give us a greater degree of independence and responsibility.

We receive excellent preparation for Higher Education, apprenticeships or employment, including presentations, visits, "mock" interviews and individual counselling. We have a wide range of guest speakers, often from our extensive alumni programme, including employees from Facebook, Ryanair, students studying abroad and much more. Focus groups help us to prepare for our chosen route, whether it is an Engineering apprenticeship, a career in medicine or a future as a barrister or solicitor.

SENIOR PREFECTS

Within the Sixth Form there are 3 major factors which determine our success; hard work, effective time management but above all, self-motivation.

We're treated differently by staff based on mutual respect which creates strong relationships. We have the opportunity to develop our strengths both in and out of the classroom to become well rounded independent individuals. We even get to dress up and look stupid from time to time! In their inspection of the school, ESTYN report that in the Sixth Form :

"students make extremely good progress in lessons. They respond very well to the highly effective teaching that they receive...their behaviour is exemplary and they make a very good contribution to the life of the school. They are aware of their teachers' high expectations of them and are motivated to meet them."

ESTYN also state that standards in the Sixth Form are outstanding and reported good or better teaching in all the Sixth Form lessons observed as part of the inspection focus.

The support programme enables us to make informed choices about our future. Here are just a few of the many activities we have experienced here in the Ysgol Eirias Sixth Form:

GIVING BACK

Giving something back to the school community is important - being involved as a prefect; acting as Language Ambassadors to support younger learners; volunteering to coach school sports teams; working with with years 7 and 8 as lower school support in lessons or acting as 6th form mentors with Year 7 pastoral groups. It's hard work but certainly rewarding.

RAISING MONEY FOR CHARITY

For all those people who don't get to dress up as Smurfs or Sumo wrestlers on their Saturday nights out, Comic Relief is a perfect opportunity. Not only are we giving to charity, but we're having fun in the process. And if you are slow to get out of bed for Children in Need, then come to school in your pyjamas instead!

If you can't 'bear' to leave Teddy behind, bring him along to improve his mind at the Teddy Bears' Picnic.

We also have our own student-led Amnesty International Group. We have organised a number of high profile awareness raising events, including guest talks from refugees living in the area.



WIDER SKILLS

The Sixth Form offers a wide range of opportunities to improve important transferable skills necessary for life outside school.

We all learn valuable skills through the Welsh Baccalaureate qualification which gives great preparation for living and working in the 21st Century. We also gain a full, graded qualification which is recognised by universities across the country. We get the opportunity to improve our confidence in public speaking by presenting our ideas in a Global Citizenship Conference. We work in teams to put together an

Enterprise Challenge and we take on individual research to produce an Independent Investigation which we can focus on our future university or career plans. Who knows perhaps we'll become the entrepreneurs of the future.

Other events held during the year help us to learn a variety of skills we never imagined we would have. Sixth Form Skills Day gives us the chance to learn how to Zumba or develop relaxation techniques or circus skills. More importantly, it takes us out of our comfort zone and encourages us to try new things.



SUMMER SCHOOLS / SUTTON TRUST

Having the opportunity to live and study in a university environment has been an eye opener. We were treated as undergraduates while on campus, attended lectures and tutorials and stayed in halls of residence. Actually seeing the relevance of our A level studies in a real situation has helped us be even more focussed on working towards our future courses and careers.

TRIPS

If we want to discover learning outside the classroom, how about CERN with Science, adventure excursions with Tourism or experience Europe in Manchester at the Christmas markets. That's just a taste of what's on offer.



YOUR QUESTIONS ANSWERED

WHY SHOULD I STAY ON IN TO THE SIXTH FORM?

In Year 11 when the pressure of work is increasing rapidly and you are no longer able to go out and enjoy yourself as freely as you were before, it is easy to become frustrated with school and impatient with its rules - it is easy to conclude that the sooner you leave the better.

For a minority, that may be the right thing to do; for the majority it would be quite wrong. Try to remember that what you feel strongly about may soon change and the most important consideration is your long term future.

An important aspect of this is to train yourself for the better, more fulfilling career that higher qualifications can give. But that is not all the Sixth Form offers. Your understanding of life will develop greatly, as your studies will be broader than your specialist areas and you will be given varied opportunities to use initiative and assume responsibility.



ISN'T SIXTH FORM JUST MORE OF THE SAME THING?

Absolutely not. For a start, you will be working in much smaller groups and this leads to a friendlier, and competitive atmosphere. Secondly, you will be with students who have chosen to specialise in that subject.

Lessons take on a different quality altogether - much greater emphasis is placed on your contribution to discussion, research and experimentation; your initiative, suggestions and observations become more important. You are more responsible for the organisation of your work and your time. Your success depends on your own sense of purpose, your determination and your self-discipline.

HOW SHOULD I CHOOSE MY SUBJECTS?

Your choice of subjects will be influenced by three interacting considerations:



Which subjects do you enjoy?



Which subjects produce the best results?



Which subjects are required for the career you have in mind?

Your present interest in a subject is usually a realistic guide to the choice you should make but beware! Subjects can change substantially between Year 11 and the Sixth Form, concentrating on different aspects and demanding an alternative style of work. Subjects you find dull now may be much more attractive to you at Sixth form level and of course, vice versa. You may also wish to study a subject not offered at GCSE.

It may be difficult to predict your summer exam results. While mock exams will give an indication, your teachers will know if you have the ability to study their subject. Their advice is invaluable. Take advantage of it.

There are certain combinations of subjects that you must take if you wish to pursue specific careers. This requires specialist help which you can obtain from the Head of Sixth Form and his team, the Heads of Faculties and Heads of Subjects.

Talk to staff and students already in the Sixth Form to help you with your decision. Use their expertise.

WHAT ABOUT THE WELSH BACCALAUREATE?

All students in the Sixth Form take the Welsh Baccalaureate. As a school we have the advantage of being able to deliver the Welsh Baccalaureate through one taught lesson per week. You will also take part in a variety of non-curriculum "Skills Days" alongside a complete pastoral and life skills programme which is used to credit the qualification.

WHAT WILL HAPPEN IF I CAN'T COPE WITH MY SUBJECTS?

Almost everyone encounters some problems initially with their courses as the work is at a higher level than before and you are expected to take greater responsibility for your own learning. However, if it becomes obvious that you are not able to rise to the demands of a particular course, even after giving it a good try, then your teachers and the Sixth Form staff will help you to consider the options open to you. Students will be expected to pass end of year AS exams if they are to continue with their courses. During the autumn term, students will be given 'Target Grades' based on ALPs data in each subject area to enable them to monitor their progress in conjunction with their form tutors and subject teachers at various times during the year.

WHAT NEXT? AFTER THE SIXTH FORM?

As soon as students begin their Sixth Form courses, they need to be seriously considering the future. Whether it be Higher Education, apprenticeships or employment, a detailed support structure is in place, including career interviews with the Careers Service in addition to a well stocked resources centre, easy access to online material and visits to Higher Education Fairs and Universities. There are also visits from past students, university and financial experts, guidance sessions on gap year opportunities, a parents' information evening, a Russell Group and Oxbridge support group, electronic application process and interview guidance.



OTHER INFORMATION / GWYBODAETH ARALL

UNIFORM

School uniform at Eirias is supported by the students themselves.

- Black knee length skirt / Black trousers
- Sixth form black V-neck jumper
- White shirt / Blouse
- Sixth form or sport / Music tie
- Black shoes
- Dark topcoat

EDUCATION MAINTENANCE ALLOWANCE (EMA)

The Education Maintenance Allowance provides support for 16 - 18 year olds in Wales who are continuing their education.

This is a means tested allowance, paid fortnightly, according to student attendance.

It aims to encourage young people to gain qualifications and help to increase their employment opportunities.

The pastoral team will provide students with all the information they need and will support students throughout the application process.

KEY POINTS

- EMA is paid fortnightly
- EMA is means tested and does not affect any benefits paid to families
- Forms will be available from school in the summer term
- Further information is available from: www.studentfinancewales.co.uk/ema



ADMISSIONS

INTRODUCTION

The number of intended admissions into the Sixth Form will be 160 students in Year 12.

ENTRY INTO YEAR 12

Priority will be given to pupils already attending Ysgol Eirias. However, applications from students from other schools / colleges are welcome, subject to meeting entry requirements.

Applications must be received by the school by the end of the February half term preceding the year of admission.

Students wishing to access courses at Ysgol Eirias Sixth Form must meet the following entry requirements:

AS courses : a minimum of 5 A*- C grades at GCSE.

Technical Diplomas & Certificates : a minimum of 4 A*- C grades at GCSE.

A2 Courses : at least an E grade on the corresponding AS course.

In all cases a good attendance record during KS4 education is required. Additional criteria for entry onto individual courses are published on the following pages and are considered to form part of this policy.

Please note: To pass the Advanced Welsh Baccalaureate, a grade C in GCSE Maths or Numeracy is required plus a grade C in GCSE English or Welsh. We would expect any student who does not have one of these qualifications to enter themselves for a resit exam in Year 12 and to attend the resit lessons provided.

YEAR 11 -> YEAR 12 THE TRANSITION

NOVEMBER
Mock Exams

JANUARY
Sixth Form Opportunities Evening
Brochure distributed
Individual interviews with Sixth Form team where appropriate

FEBRUARY
Follow-up to interviews
Meetings with existing Year 12 groups

FEBRUARY
Application forms deadline

MARCH / APRIL
Year 11 Parents Evening

MAY
Students leave school and begin GCSE exams

JUNE
Induction Day

AUGUST
GCSE Results: Support counselling
Opportunity to enrol on courses

SEPTEMBER
Sixth Form enrolment
(for any student not enrolled on results day)



ADVANCED SKILLS CHALLENGE / HER SGILIAU UWCH

ADVANCED SKILLS CHALLENGE CERTIFICATE

Ysgol Eirias delivers the Advanced Skills Challenge Certificate as part of the core Sixth Form programme allowing you to gain vital UCAS points to assist with university applications and building a combination of academic and non-academic skills which employers and universities require in an ever competitive world. Delivery of the Skills Challenge enhances skills, whilst maintaining the breadth of optional courses available.

During your Skills Challenge course you will take part in 3 challenges; Community Challenge,

Enterprise and Employability Challenge and Global Citizen Challenge.

During your final year you will carry out your Individual Project, this is where you take control, you set the title, you choose the topic and you carry out the research, this element shadows that of the university dissertation, preparing you for the next step whatever path you choose to take. In addition to these elements you must also gain a C grade or above in GCSE Maths or GCSE Numeracy and GCSE English Language or GCSE Welsh Language plus 2

A2 qualifications. The Skills Challenge has no examinations, all evidence is from Controlled Assessments.

The Skills Challenge builds on the strengths of the Sixth Form experience at Ysgol Eirias and allows you to gain recognition for your enrichment activities such as the long established and highly successful Lower School Support programme which provides evidence for the Community Challenge. Similarly, the Employability Challenge recognises the careful planning and research that you invest when considering your next step, with staff supporting you in

your university or employment application.

The Skills Challenge has been designed alongside stakeholders at all levels including employers and universities; "I believe the Welsh Bacalaureate core, along with 3 'A' levels will set them up in good stead ready for university" Dr Samina Khan (Director for Undergraduate Admissions, Oxford University).

The Skills Challenge is not your average advanced course, it allows you to develop skills to become future proof. The question is not why take the Skills Challenge, but in today's market how could you afford not to?

ENTRY REQUIREMENT



Advanced level: 2 GCSEs at Grade C or above and Mathematics or Numeracy GCSE and English GCSE at Grade D or above.

EXAM BOARD



WJEC

HEAD OF SUBJECT



Miss S Bell



APPLIED BUSINESS STUDIES / ASTUDIAETHAU BUSNES CYMHWYSOL

WJEC LEVEL 3 CERTIFICATE & DIPLOMA

Are you the next Apprentice? Could you pitch to The Dragons? Want to be able to calm an angry customer or sell ice-cream to a penguin? . . . If so, this is the course for you.

Applied Business is a dynamic and challenging course that can lead to university, employment or help you take the first steps to being an entrepreneur!

The course will allow you to study all aspects of running and working in a business, including: business decisions, dealing with customers, communication, marketing and market research.

ENTRY REQUIREMENT



Four GCSEs at Grade C or above
GCSE Business Studies Grade C
or above (if studied).

HEAD OF SUBJECT



Mr D Jones

The units of study will allow you to put business theory into practice and develop transferable skills which will equip you for employment or further study.

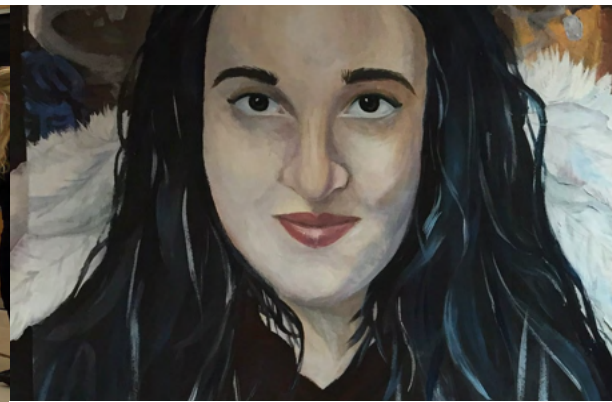
You will consider the problems that businesses face, solutions to these problems and their consequences. You will become better at making decisions - a skill highly sought by employers and universities.

50% of the course is assessed by Exam, 50% by Internal Assessments. The course is likely to suit students who are good at organising their work effectively, meet deadlines and prefer to spread their assessments out over the course of a year. You will be given the opportunity to meet successful business people and visit companies to gain an insight into the business world.

EXAM BOARD



WJEC



ART AND DESIGN / CELF A DYLUNIO

AS & A2 QUALIFICATION

This course offers you the opportunity to extend your passion for art and appreciation of artworks. You will explore the creative process of artists past and present, investigate and experience a range of processes and techniques using a wide variety of media. You will explore an array of personal responses linked to a range of themes enabling you to create your own fine art.

You will experience a variety of lesson approaches including practical demonstrations, workshops, artist-led activities and discussion work, and your studies are supported throughout with the

ENTRY REQUIREMENT

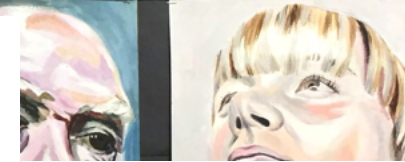


GCSE Art A* - B Or GCSE Textiles
by special arrangement PLUS
GCSE English Language A* - B
Or GCSE English Literature A* - B

HEAD OF SUBJECT



Mrs M Millington Cassidy



use of ICT and digital photography in the classroom. You will have the opportunity to partake in wider learning experiences to those offered in the classroom alone through our annual art gallery visits and we run regular competitions. Further to this, you can feed your awareness of art by visiting other galleries.

This course appropriately leads you in the pursuit of art in Further and Higher Education, to complete foundation courses in Coleg Menai and Llandrillo or have the opportunity to apply directly to a degree course.

This A level course provides a strong creative grounding within the realms of fine art, on which to base any art based career, from curating to printmaking and animation to illustration and is suitable for all motivated young artists with a desire to express.

EXAM BOARD



WJEC



BIOLOGY / BIOLEG

AS & A2 QUALIFICATION

Have you ever wanted to be the first to discover a new species of animal, find a cure for a rare parasitic disease or be the first person to grow a new heart from stem cells? Do you have the interest, inspiration and the ambition to be a future Nobel Prize winner? If the answer to these questions is 'Yes', then why not study Biology?

The Biology AS course consists of 2 theory units worth 20% each of the A2 qualification. You will be studying Basic Biochemistry and Cell organization ensuring a smooth transition from GCSE. The second unit explores Biodiversity and Physiology

of body systems. Each theory module is assessed by a 90 minute examination.

The A level course includes the AS level units, 2 theory units worth 25% each and a practical unit worth 10%. You will look at Energy, Homeostasis and the Environment in Unit 3. You will have the opportunity to develop understanding of Variation and Inheritance plus an option in Unit 4.

ENTRY REQUIREMENT



GCSE Science Double Award
A*A* - B B at Higher Tier
And GCSE Mathematics A* - B at
Higher Tier

HEAD OF SUBJECT



Mrs R Haslock

EXAM BOARD



WJEC



BUSINESS STUDIES / ASTUDIAETHAU BUSNES

AS & A2 QUALIFICATION

The A Level Business course provides learners with an introduction to the dynamic business environment and the importance of entrepreneurial activity in creating business opportunities and sustaining business growth.

You will gain a holistic understanding of business in a range of contexts and a critical understanding of different types of organisations and their ability to meet society's needs and wants. You will have the chance to generate enterprising and creative approaches to business problems and issues and to acquire a wide range of business and generic skills, including

decision making, problem solving, the challenging of assumptions and critical analysis.

The AS accounts for 40% of the total A Level, it is divided into two examinations: Unit 1 covers Business Opportunities, including business start-ups, SMEs and other types of business organisations. Unit 2 covers Business Functions and involves data response questions covering the full AS course content.

The A2 units account for 60% of the A Level and are also divided into two examinations: Unit 3 covers business strategy and analytical techniques used in decision making. Unit 4 is a case study and essay-based exam covering the full A level content

ENTRY REQUIREMENT



GCSE Business A* - B (if studied)
Or GCSE English Language A* - B
(if GCSE Business Studies has not
been studied).

HEAD OF SUBJECT



Mr D Jones

EXAM BOARD



WJEC



CHEMISTRY / CEMEG

AS & A2 QUALIFICATION

The AS Chemistry course is designed to enable a smooth transition from GCSE and builds on popular areas of the Chemistry course from years 10 and 11. These involve the language of chemistry, structure of matter and simple reactions, in addition to looking at energy, rate and chemistry of carbon compounds. From the beginning of the course you will be given an opportunity to develop your practical skills in a variety of experiments including the testing of unknown compounds as well as the synthesis of new materials.

If you continue onto the A2 course you will then move on to study the latest methods

ENTRY REQUIREMENT



GCSE Science Double Award A*A* - B B at Higher Tier
And GCSE Mathematics A* - B at Higher Tier

HEAD OF SUBJECT



Dr H Williams

of drug design and structural analysis in addition to looking at why chemical reactions happen on a fundamental level. Here again, the theoretical aspects of the course are always consolidated with interesting and appropriate practical tasks.

Chemistry is regarded as a discipline that requires logical thinking and a clear and organised mind. It uses and develops a host of skills which employers regard as being invaluable in the workplace, including problem solving, team working, numeracy, communication and practical skills. It is a subject which is at the heart of a variety of science based careers, such as medicine, veterinary sciences, dentistry and pharmacy. Alternatively, an A level in chemistry can also be used as a stepping stone to a non-scientific career in fields as diverse as business, law, accounting and management.

EXAM BOARD



WJEC



COMPUTER SCIENCE / CYFRIFIADUREG

AS & A2 QUALIFICATION

Computer Science will give you a good grounding in computing, including an understanding of computer systems, the principles of programming and the solving of problems. If you are good at Maths; think logically and enjoy understanding how technology works, creating solutions to problems with computer programming and practical course work then you will enjoy this course.

You will learn about the hardware of a computer system, common types of software and simple logic and you will acquire the skills to analyse, design and create computer software.

ENTRY REQUIREMENT



GCSE Mathematics A* - B

HEAD OF SUBJECT



Mr D Lloyd

You will look at the development of computer technology and the effects it has had on the society we all live in.

The course includes external examinations including written exams on Fundamentals of Computer Programming and System Development and Computer Architecture, Communications and Applications and a practical examination using programming to solve problems, as well as final project creating a programmed solution to a problem.

This course is excellent preparation if you are intending to pursue Computer Science at degree level, or are considering any kind of career in computing as the content is designed to include more technical content than traditional ICT.

EXAM BOARD



WJEC



CYMRAEG AIL IAITH / WELSH SECOND LANGUAGE

AS & A2 QUALIFICATION

The Welsh Second Language A level includes practical and academic elements and is assessed through written and oral examinations as well as coursework. You will acquire the language skills needed to appreciate Welsh literature and media, focusing on modern themes and advanced literary techniques. The course also enables you to develop your grammatical skills to a very high standard.

The coursework component in year 12 allows you to choose a topic of personal interest which relates to Wales or Welsh issues. It provides you with an insight into the history of the Welsh language and

ENTRY REQUIREMENT



GCSE Welsh A*- B [Higher Tier]

HEAD OF SUBJECT



Mr D Williams

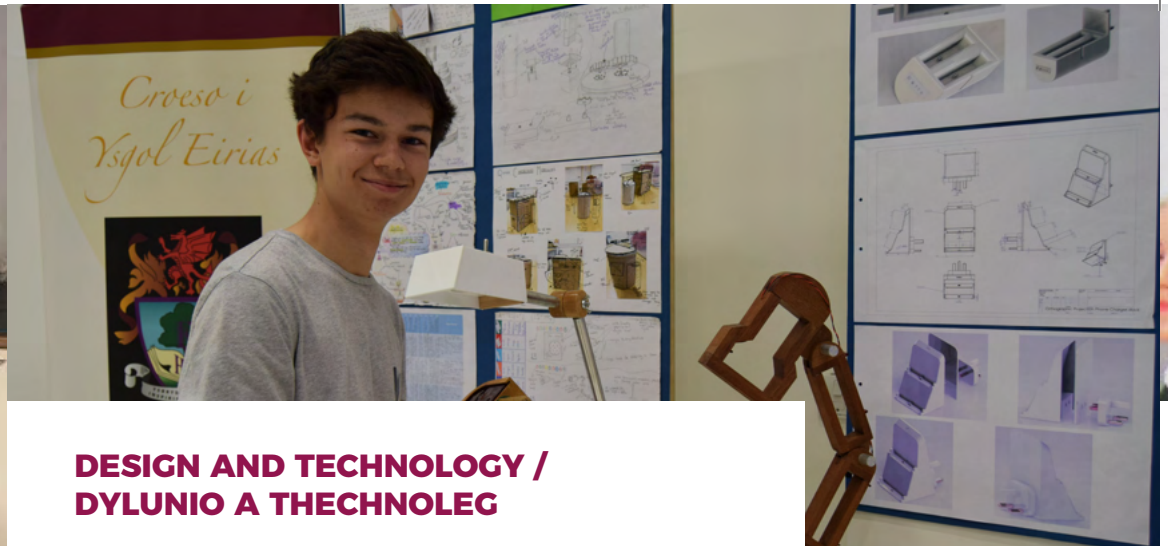
its status in today's society. The Welsh faculty will also provide you with opportunities to use your Welsh outside the classroom - from Eisteddfodau to working with younger students as mentors in Welsh lessons. You will have the opportunity to attend a 3 day residential course at Glan-llyn where workshops and lectures are led by authors, poets and other course specialists.

By the end of the course you will be able to communicate in Welsh with confidence and fluency, orally and in writing. The ability to speak Welsh is essential for many jobs in the public sector in Wales and is increasingly required in the private sector in jobs which involve working with people. If you wish to specialise in Welsh at university, career opportunities include the Welsh media, translating, nursing and policing in Wales as well as teaching at both primary and secondary level.

EXAM BOARD



WJEC



DESIGN AND TECHNOLOGY / DYLUNIO A THECHNOLEG

AS & A2 QUALIFICATION

At AS and A2 level you will be involved in major individual Design and Make projects. Additionally, theory work will be covered, leading towards an end of year examination.

Everywhere we look today we see "products": from electronic products to furniture, posters and even packaging. All these products have been designed by a product designer. Product Design is concerned with learning how to design high quality products of all sorts using a range of materials.

The Product Design course helps you find out about designers, see how products are

designed and made and then use this knowledge to produce designs of your own. These could be items of furniture, lighting and even architectural designs.

Each year you will learn a range of manufacturing methods and look at existing products in some depth. You will learn how they are made in industry and the processes that manufacturers use. At the end of each year you will sit a written exam worth 50%.

However, the other 50% of your marks will come from the Practical Design Project. You will need to investigate a problem that needs solving, write your own design brief and then design and make a high quality and innovative product. Maybe a chair, a desk, a mood-light or even a model of a new building. The design will be up to you!

ENTRY REQUIREMENT



Any GCSE Design subject A*- C

HEAD OF SUBJECT

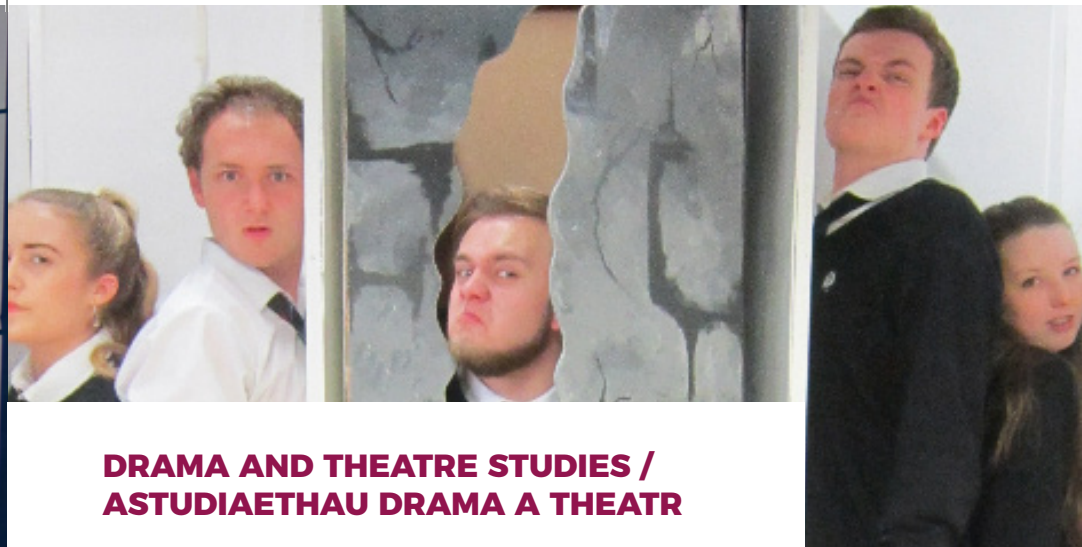


Mr M Sherry

EXAM BOARD



WJEC



DRAMA AND THEATRE STUDIES / ASTUDIAETHAU DRAMA A THEATR

AS & A2 QUALIFICATION

Want a career on stage? Want a career in the classroom? Need to develop your confidence?

This course offers the opportunity for talented performers to study and take part in theatrical pieces based on a range of text and stimuli. You will be involved in a performance workshop which requires you to perform a section of scripted text and a piece of devised drama, which will also be performed to an examiner and a paying audience.

You will have an opportunity to study a range of theatre practitioners, such as Brecht, Artaud and Berkoff, and apply their theories to your own performances. You will become directors and explore the technical aspects of the theatre such as Set Design, Lighting, Sound, Costume and Make-Up. You will also have the exciting opportunity to be part of the audience in various shows such as West End Performances.

Set plays range from show stopping Shakespeare to astounding American playwrights, and will give students a wide range of experiences of drama on the stage.

ENTRY REQUIREMENT



GCSE English Language A* - C and GCSE English Literature A* - B and GCSE Drama A* - B (or reference to show involvement in external productions)

HEAD OF SUBJECT



Mrs J Caton

EXAM BOARD



WJEC



ECONOMICS / ECONOMEG

AS & A2 QUALIFICATION

What is Economics? Imagine that you are one of twenty-five people stranded on a desert island. A number of issues will arise immediately -

- How will you decide what to make?
- What will influence your decision?
- Should everyone receive an equal share of the weekly produce?
- How will you decide which person should do which job?

Now imagine that you are dealing with an island containing sixty million people.....!

Economics concerns itself with the system

we use to answer these challenging questions. The system we choose then generates new problems - what about unemployment, inflation, illegal drugs, minimum wages, the environment etc? As good economists, we must understand these problems and seek solutions.

Economics provides an extremely interesting way to develop skills valued by higher education and employers. You will be trained to be analytical - you will become better at considering problems, solutions and the implications of those solutions. You will learn to evaluate - to weigh up the pros and cons of a solution.

Independent research suggests economists earned more than almost all other graduates. One study found that after 10 years, male economics graduates earned more than all other graduates except dentists.

ENTRY REQUIREMENT



GCSE English Language A* - B

HEAD OF SUBJECT



Mr D Jones

EXAM BOARD



WJEC



ENGLISH LANGUAGE / IAITH SAESNEG

AS & A2 QUALIFICATION

This course offers the opportunity for budding writers and linguists to extend their skills and develop their analysis of how people talk and write. We offer students a variety of Creative Writing Workshops including Travel Writing, Dramatic Monologues and Children's Books. We use modern samples of Spoken Discourse to analyse body language and language used by individuals including reality TV, sitcoms, soap operas, comedies and films. You will even be recording and analysing family and friends!

You will experience a range of lesson opportunities including workshops, presentations, group activities, paired work, ICT research and production. This course is ideal for students who enjoy watching and analysing others! It links into fields of work including journalism, police, teaching, speech therapy, psychology and law. With topics such as gender, accent and dialect, child language and language and power, there is a great balance to keep everyone interested!

ENTRY REQUIREMENT



GCSE English Language A* - B
And GCSE English Literature
A* - B

HEAD OF SUBJECT



Mrs H Blackwell

EXAM BOARD



WJEC



ENGLISH LITERATURE / LLENYDDIAETH SAESNEG

AS & A2 QUALIFICATION

This course builds on the skills and enthusiasm for literature you will already have acquired at GCSE. It is an opportunity for all lovers of reading to broaden your range of reading experiences and to develop skills in appreciation of writing. The texts studied are varied and exciting, including novels, plays and poetry. You will encounter writers such as Duffy, Larkin, Bronte and Marlowe and you will be guided on your journey of literary experience!

ENTRY REQUIREMENT



GCSE English Language A* - B
And GCSE English Literature
A* - B

HEAD OF SUBJECT

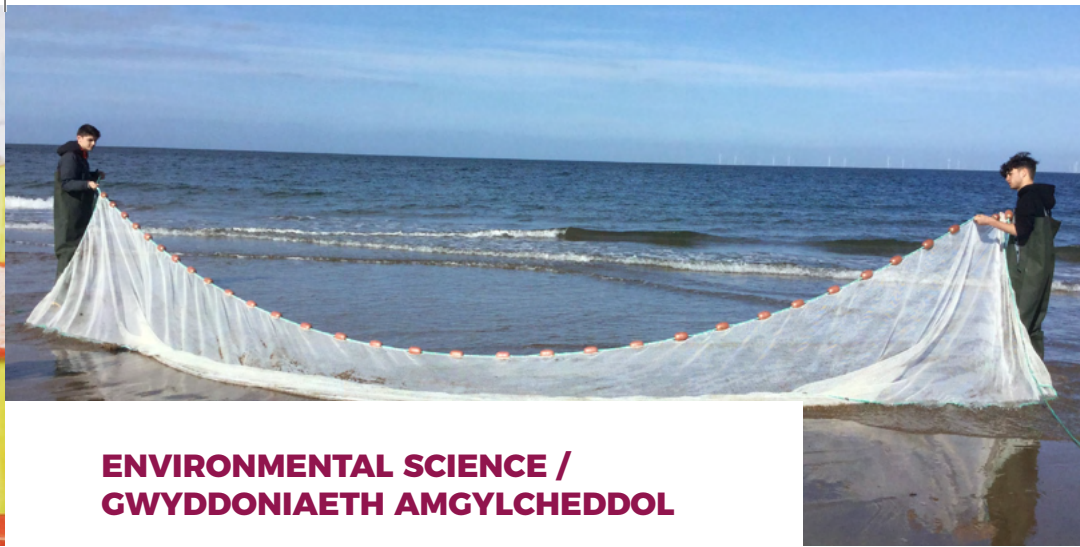


Mrs S Gee

EXAM BOARD



WJEC



ENVIRONMENTAL SCIENCE / GWYDDONIAETH AMGYLCHEDDOL

AS & A2 QUALIFICATION

Environmental science is an interdisciplinary academic field that integrates physical, biological and information sciences to the study of the environment, and the solution of environmental problems.

In other words.....

.....it is how the theory of biology, chemistry and physics applies to the sustainability of our Earth's resources, and how that knowledge can be used to solve current and future environmental issues.

If you are considering further study or training in a Science related occupation, why not consider doing Environmental Science qualification as an alternative to, or alongside, traditional Science A-levels?

Learn more about conservation, biodiversity, how conditions of Earth developed to sustain life, the atmosphere, hydrosphere and lithosphere and how humans are positively and negatively affecting them.

ENTRY REQUIREMENT



GCSE Science Double Award A*A*
- CC GCSE Mathematics A* - C
and GCSE English A* - C

HEAD OF SUBJECT



Miss S Bell

EXAM BOARD



AQA



FINANCIAL STUDIES / ASTUDIAETHAU ARIANNOL

IFS LEVEL 3 CERTIFICATE & DIPLOMA

The Financial Studies course has been designed to provide students with a challenging qualification covering the core disciplines of financial capability. Learners are encouraged to become responsible borrowers, sensible savers, and have an appreciation of the need for financial planning throughout their life.

As an Applied General qualification, CeFS is a comprehensive introduction to personal finance. It introduces students to the risks and challenges involved in personal finance and to tools for effective planning. Through developing core skills of critical analysis and evaluation, synthesis and written

communication, CeFS provides a foundation for further study in business and finance-related disciplines, as well as a wide range of other fields.

CeFS consists of two mandatory units: Unit 1 - Financial Capability for the Immediate and Short Term (FCIS); and Unit 2 - Financial Capability for the Medium and Long Term (FCML). Both units will be assessed by a 45-minute multiple choice online examination and a 105-minute written examination.

In year 13 students are given the opportunity to develop and enhance their knowledge and skills by studying the Diploma in Financial Studies (DipFS), which consists of Unit 3 - Sustainability of an Individual's Finances (SIF); and Unit 4 - Sustainability of the Financial Services System (SFS). Both Units are assessed by a 1-hour multiple choice examination and a 2-hour written examination.

ENTRY REQUIREMENT



GCSE English Language A* - C
And GCSE Mathematics A* - C

HEAD OF SUBJECT



Miss C Richardson

EXAM BOARD



LIBF



GEOGRAPHY / DAEARYDDIAETH

AS & A2 QUALIFICATION

Geography opens your eyes to the wonderment of the world around you. This course is designed to allow students to develop an understanding of: the forces influencing our natural environment; the issues affecting people and the places where they live; how people and the environment interact; an appreciation of current events and global issues; what decisions are being made about the use and management of resources.

We offer students a variety of field trips and out of classroom experiences, alongside taught lessons. Teaching involves the use

of contemporary examples of geographical issues, allowing a deeper understanding of the world around you.

As well as developing your geographical knowledge through a wide and varied curriculum, this course will enable you to develop a number of transferable skills of use in later life. Topic areas such as hazard management, urban sustainability, management of physical processes and inequalities in development enhance research, organisational and numeracy skills.

Students will experience a range of lessons and activities including group work, paired work, presentations, ICT research and practical activities. The course is well suited to those with an interest in the world around them, while leading to a number of potential employment opportunities, including the leisure industry, teaching, law, accountancy, journalism & civil engineering.

ENTRY REQUIREMENT



GCSE Geography A* - B
GCSE English A* - B

HEAD OF SUBJECT



Mrs S Marriott

EXAM BOARD



WJEC



HEALTH AND SOCIAL CARE / IECHYD A GOFAL CYMDEITHASOL

WJEC LEVEL 3 CERTIFICATE & DIPLOMA

Health and Social Care provides you with a unique opportunity to study a vocational course at A level standard. The way in which it is delivered and assessed, allows you to explore topics through research and work-related placements.

A variety of tasks enable you to use methods such as presentations, posters and leaflets. There is also the opportunity to carry out practical tasks in care settings such as residential homes. You will develop the skills to work independently or as part of a team. ICT and communication are also integral to the course.

The Diploma consists of 6 Units and is equivalent to two A Levels. Two of the units are externally examined whilst the other four are Controlled Assessment Tasks. The course will include areas such as, Individual Care Plans, Promoting the Rights of Individuals and working in the Health and Social Care sector.

If you are thinking of a career in health, social care or childcare, this is the course for you. You can progress to university or work related qualifications in primary teaching, nursing, social work, occupational therapy and many others.

Please note: this subject needs to be taken from Option Pool 1 AND Option Pool 2.

ENTRY REQUIREMENT



A desire to work in Health and Social Care And 4 GCSEs at C grade or above

HEAD OF SUBJECT



Mr D Jones

EXAM BOARD



WJEC



HISTORY / HANES

AS & A2 QUALIFICATION

Are you inquisitive? Do you like finding the reasons why something might have happened? Does it excite you to shed light on problems that have puzzled people in the past? Do you like to form your own opinions, even if they might be different from those of your friends or teachers? A level History is for you!

Studying the past is fun! People in the past were every bit as clever, stupid, interesting and varied as people today. Studying the people of the past can give you a real insight into people and society today. It will help you to understand how and why humans behave as they do when

confronted with a crisis. In A level History you will study Weimar and Nazi Germany [1918-45], Wales and England during the Tudor period and America from 1890 to 1990. You will also carry out a personal investigation of an historical issue for coursework by studying different historical interpretations.

History is highly valued by employers because it teaches you to think and make up your own mind. In this rapidly changing world, employers are looking for people who are independent thinkers, open minded, disciplined, good at problem solving and able to pick out the essential from the trivial. In other words - they are looking for historians!

History is particularly useful for careers in education, architecture, journalism, the legal profession, local government, politics, heritage and tourism, research and TV.

ENTRY REQUIREMENT



GCSE History A* - B
And GCSE English Language
A* - B

HEAD OF SUBJECT



Miss S Haslehurst

EXAM BOARD



WJEC



DIGITAL TECHNOLOGY / TECHNOLEG DDIGIDOL

AS & A2 QUALIFICATION

This new qualification advances learners' understanding of the digital technologies that are used by individuals and organisations across the world, including how they have developed and how they continue to change.

In Year 12 - AS you will study two units of work. Unit 1 Innovation in Digital Technology which is a written two hour assessment taken on screen which is 20% of the qualification. You will also complete unit 2 Creative Digital Practices worth 20% which is a non-examined assessment.

This focuses on game development including planning, designing, creating and testing.

In Year 13 - A Level you will study two further units of work. A two and a half assessment worth 30% taken on screen looking at the collection, storing and analysis of data, cyber security and digital networks. You will also create an e-commerce website linked to a database. This is worth 30% and is assessed by a non-examined assessment. For this you will create, develop, review, test and refine your product.

ENTRY REQUIREMENT



GCSE in ICT or Digital Technology
at grade C or higher. A Grade C
in English Language or higher (if
GCSE ICT not studied)

HEAD OF SUBJECT



Mr D Lloyd

EXAM BOARD



WJEC



MATHEMATICS / MATHEMATEG

AS & A2 QUALIFICATION

Mathematics is a highly regarded A level, which complements science-based subjects and offers a broad balance to arts based students. It requires a high degree of commitment from you as a student and is of particular use to those of you thinking of Higher Education based in the sciences, business and engineering.

The A level Mathematics course allows you to apply your mathematical knowledge to more practical situations. Many mathematical concepts covered in the course are based on standard industry

methods allowing you to understand how basic principles are derived not only in pure mathematics but also in statistics and mechanics modules.

The key skills of mathematics are observing and recording, together with the discovery and experimentation of techniques and materials. This is accompanied by critical research and opinion, composition and creativity of ideas and presenting solutions. Teachers have developed a range of interactive and visual lessons to implement paired, individual and team work. The aim is to develop you into confident mathematical practitioners.

ENTRY REQUIREMENT



GCSE Higher Tier
Mathematics A* - B

HEAD OF SUBJECT

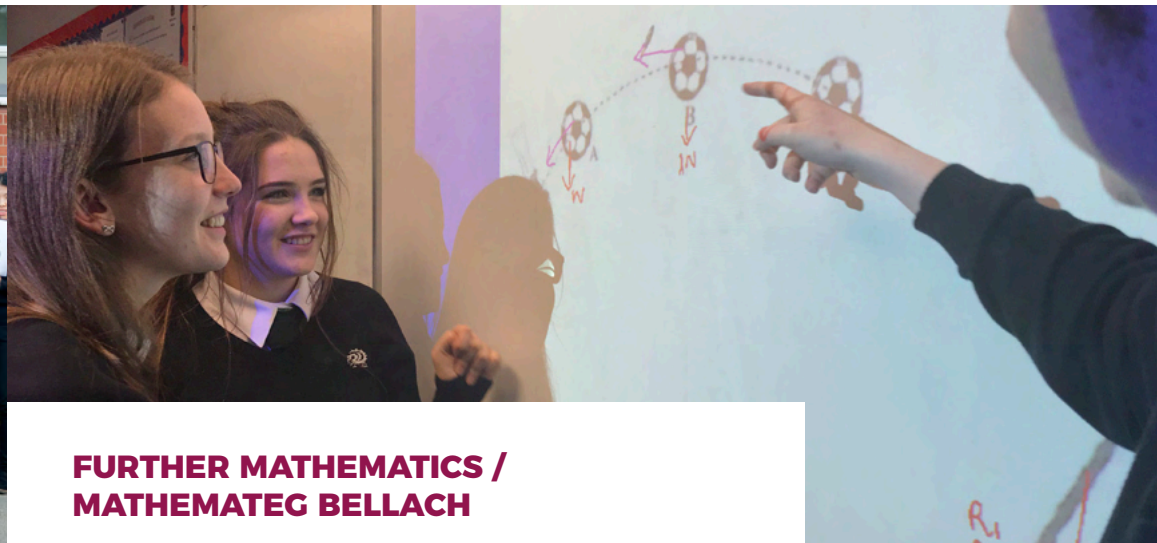


Miss C Richardson

EXAM BOARD



WJEC



FURTHER MATHEMATICS / MATHEMATEG BELLACH

AS & A2 QUALIFICATION

This course is unusual in that it is an extension of the usual A level Mathematics course and can only be studied by those already doing A level Mathematics.

Further Mathematics provides you with the opportunity to see how mathematics is applied and supports many other subjects with mathematics based content.

Many of the skills developed in A level Mathematics are extended and enriched in Further Mathematics. The application of mathematics to real life situations is explored in much more depth.

The course is very valuable if you are considering a mathematics based degree. Good candidates for Science, Economics, Engineering or Computer Sciences would also find this course very beneficial.

ENTRY REQUIREMENT



GCSE Higher Tier
Mathematics A* - A

HEAD OF SUBJECT



Miss C Richardson

EXAM BOARD



WJEC



MEDIA STUDIES / ASTUDIAETHAU CYFRYNGAU

AS & A2 QUALIFICATION

In an increasingly media-saturated world, this course offers the chance for enthusiastic media users and budding media producers to develop their skills in analysing, producing and evaluating a range of contemporary media forms.

You will get the chance to experience various media industries and examine how they produce a range of 'texts' which contribute to your understanding and enjoyment of the world as audiences/ consumers.

The course is assessed partly through examination and partly through coursework portfolios. There is an emphasis on 'hands on' practical study. You will investigate and produce a variety of media pieces, such as music videos, websites, film trailers and television advertisements, in response to realistic industry briefs and simulations.

Unfortunately, Media Studies AS & A2 is unavailable for September 2022.

ENTRY REQUIREMENT



GCSE English Language A* - C
And GCSE English Literature A* - C
And WJEC GCSE Media A - B if studied at GCSE

HEAD OF SUBJECT



Mrs J Caton

EXAM BOARD



WJEC



MEDICAL SCIENCE / GWYDDOR FEDDYGOL

WJEC LEVEL 3 CERTIFICATE & DIPLOMA

If you are considering further study or training in a Biology related occupation, why not consider doing this new Medical Science qualification as an alternative to, or alongside, the traditional Biology A-level?

Learn how the different body systems work and how these are affected by disease and lifestyle choices. How are these diseases diagnosed? How do the treatment and medicines prescribed work? What new advances in the treatment of disease are currently being developed?

There is an option of doing the one year Certificate studying Human Health and Disease, Physiological Measurements and Medical Research Methods or continuing into Year 13 to complete the Diploma studying Medicines and the Treatment of Disease, Clinical Laboratory Techniques and Medical Case Studies.

The course is assessed through exam (50%) and controlled assessment tasks (50%) in both years.

ENTRY REQUIREMENT



GCSE Science Double Award A*A*
- CC; GCSE Mathematics A* - C
and English A* - C

HEAD OF SUBJECT



Miss S Bell

EXAM BOARD



WJEC



MODERN FOREIGN LANGUAGES / IEITHOEDD MODERN DRAMOR

GERMAN: AS & A2 FRENCH: AS & A2

"Businesses are looking for employees with language skills. As globalisation accelerates, the ability to communicate internationally is becoming a prerequisite for success." Miles Templeton, Director General, Institute of Directors.

In a multilingual world, whatever career path you choose, studying French or German will provide you with transferable skills in a competitive market. Salary rises for those using languages at work are estimated to be between 8% and 20%. Universities offer you the flexibility to combine your linguistic skills with other

subjects ranging from Accounting and Architecture to Television Studies and Tourism.

In the MFL departments at Ysgol Eirias, we aim to equip our students with the skills to communicate confidently in the target language, focusing on spontaneous speech and fluency. This is achieved through dynamic delivery of the A level curriculum, smaller teaching groups and a strong focus on speaking skills and strong links with further education establishments.

Students develop a real understanding of the cultural nuances of French and German speaking countries whilst studying social issues, modern technologies, literature and films. In addition to developing linguistic skills, this knowledge is invaluable for students who want to travel or work in these countries in the future.

ENTRY REQUIREMENT



GCSE French / German A* - B

HEAD OF SUBJECT



FRENCH: Miss I Williams
GERMAN : Mrs B Gordon

EXAM BOARD



WJEC



MUSIC / CERDDORIAETH

AS & A2 QUALIFICATION

Studying Music at A Level gives you the opportunity to continue to develop your performing, composing and listening and appraising skills.

Both the AS and the A Level courses explore the development of the Symphony through the Classical and Romantic periods. You will also study the genre of Musical Theatre, looking at shows by composers including Cole Porter, Andrew Lloyd Webber and Stephen Schwartz.

A fully equipped ICT Music room is available for you to further develop your composition skills using the sequencing program Sibelius.

A live recital forms an important element of the course and you can develop your performance skills by participating in, or organising, a wide range of extra-curricular activities including Choir, Orchestra, Gospel Choir and various ensembles.

ENTRY REQUIREMENT



GCSE Music A* - B or similar knowledge and standard such as Grade 5 Practical (Associated Board) and Grade 5 Theory (Associated Board)

HEAD OF SUBJECT

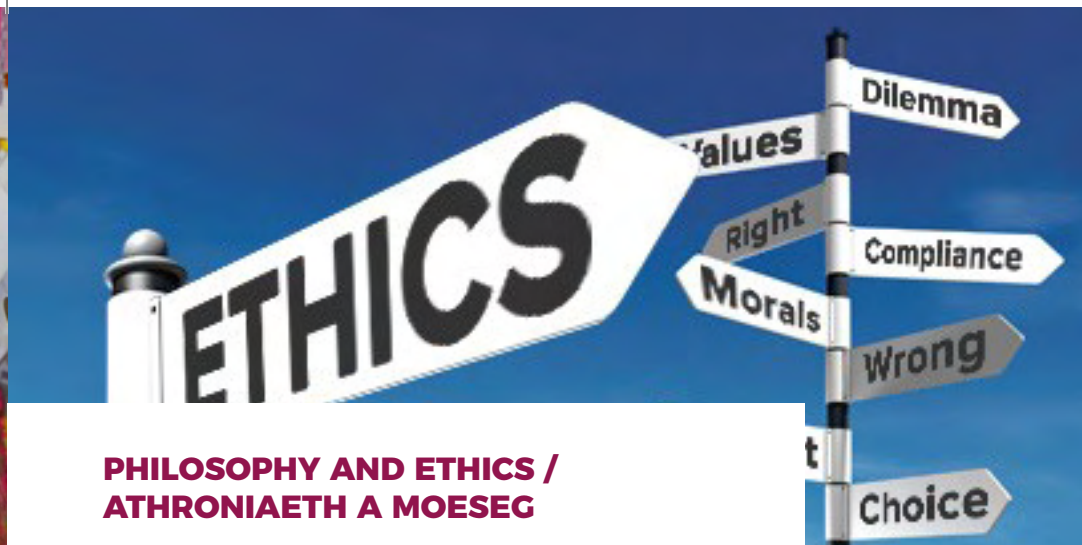


Miss E Hammerton

EXAM BOARD



WJEC



PHILOSOPHY AND ETHICS / ATHRONIAETH A MOESG

AS & A2 QUALIFICATION

Philosophy and Ethics gives you the opportunity to study some of the influential questions which people have always asked about life: Why are we here? How should we behave? And the relationship between God and Humanity. Students will need to have an open, inquiring and critical approach to the subject.

This course is designed to allow students to develop an understanding of a wide range of issues including: the existence of God, evil and suffering, mysticism, natural law, situation ethics and utilitarianism. You will be able to develop your knowledge of topics

such as, applied ethics, religious language, revelation, free will and determination. You will all undertake an introduction to the study of religion through the example of Buddhism.

Students will experience a range of lessons and activities including, group and paired work, presentations, discussions, debates and the use of ICT.

Many subjects go well with Philosophy and Ethics, for example English, History, Modern Languages, Science, Sociology, Geography and Psychology. Philosophy and Ethics can also be a useful complement to science subjects. The skills developed during the course are particularly useful for careers in law, education, politics, medicine, administration or the media.

The ultimate reasoning course to tackle the challenges of life!

ENTRY REQUIREMENT



GCSE RS A* - B
And GCSE English Language
A* - B

HEAD OF SUBJECT



Mrs C Davies

EXAM BOARD



WJEC



PHYSICS / FFISEG

AS & A2 QUALIFICATION

Ever wondered what a 'quark' is? The AS Physics course is designed to provide you with a smooth transition from GCSE and builds on popular areas of GCSE work. You will look into areas of physics on a microscopic and macroscopic scale. The course visits areas of modern physics such as the study of stars and particle physics.

A2 Physics combines the fascinating areas of traditional and contemporary physics with a range of medical physics, the existence of dark matter, fields and vibrations.

A good physicist is someone who can

communicate effectively, wants to find out how things in the physical world work, has good problem solving skills and can carry out investigations with clear, logical thinking. The numeracy, communication, team working and problem solving skills you develop will make you an attractive employee in a range of areas.

An A level in Physics offers a good foundation for any higher scientific, medical or engineering study, or provides a base for non-scientific careers such as in mathematics, accountancy, architecture, radiotherapy and many more.

The course offers you more than just academic qualifications. Through trips, visiting speakers and competitions, your awareness of physics will rocket!

ENTRY REQUIREMENT



GCSE Science Double Award A*
A* - B B at Higher Tier
And GCSE Mathematics A* - B at
Higher Tier

HEAD OF SUBJECT



Miss S Taylor

EXAM BOARD



WJEC



SOCIOLOGY / CYMDEITHASEG

AS & A2 QUALIFICATION

If you have developed an interest in any of the Humanities and want to know more about what motivates people and makes them behave as they do then this is the subject for you!

Sociology is the study of the individual and society, which comprises of a mixture of current affairs, history, human geography, philosophy, economics and research.

You will undertake in depth study into Gender, Social Class and Ethnicity and apply these social characteristics to the Family, Education, Criminology, Poverty and Social Inequality.

ENTRY REQUIREMENT



GCSE English Language A* - B and One of History, Geography, RS or Short Course RS at A* - B

HEAD OF SUBJECT



Miss K Alexander

Whether you decide to take Sociology as an A level, pursue it as a degree or develop a career, you will find that most courses and jobs have an element of sociology in them. There are very few situations that do not involve working with people, which requires the insight acquired by the study of Sociology.

Career options include human resource management, the Armed Forces, the Police, teaching, nursing, occupational therapy, social work and the probation service.

If you are naturally inquisitive, argumentative, do not see the world in black and white terms, are prepared to read widely, observe and research the world around you, then this subject will enable you to see everyday life in a completely different way. Sociology is a voyage of discovery, an experience that will change the way in which you think about everything you do.

EXAM BOARD



WJEC



SPORT / CHWARAEON

CAMBRIDGE TECHNICAL LEVEL 3 INTRODUCTORY DIPLOMA & DIPLOMA

There are 2 courses for students who want to study sport in the sixth form. The Cambridge Technical Introductory Diploma in Sport and Physical Activity is the equivalent to 1 A level. The Technical Diploma is equivalent to 2 A levels.

Both courses offer a broad and varied opportunity for students to develop the skills and knowledge they need to work in the leisure industry or progress to a sport related degree course at university.

ENTRY REQUIREMENT



Significant involvement and interest in Sport in addition to GCSE Science A* - C

HEAD OF SUBJECT



Mr N Wilkinson

The courses have some mandatory units which must be completed by all students. All units are assessed internally and graded from fail to distinction. The grades are moderated by OCR who visit us 3 times each year.

The units are significant pieces of work and students must have the motivation, organisation, determination and ability to work unsupervised to complete each task to a high standard if they are to be successful.

EXAM BOARD



OCR



TOURISM / THWRISTIAETH

WJEC LEVEL 3 DIPLOMA IN TOURISM

Fancy a career in Event Management?

Want to join one of the UK's biggest industries employing over three million people and worth £126.9bn to the economy?

If you have answered 'yes' to either of these questions then this is the course for you.

This exciting qualification will help you to prepare for employment in this truly global industry. You will study a range of tourist destinations throughout the world, investigate the impacts of tourism on

different regions and gain experience of managing actual events.

The Tourism course consists of coursework and an examination.

You will also have the opportunity to visit a European city of your choice in the second year of the course.

There are a vast range of courses available at university in order to further your studies. These range from BSCs in Tourism Management to BAs in Event Management.

ENTRY REQUIREMENT



Four GCSEs at grade C or above.

HEAD OF SUBJECT



Mr M Davies

EXAM BOARD



WJEC



LEARNING IN CONWY / LINC COURSES

AS & A2 QUALIFICATION

All Conwy schools and Coleg Llandrillo work together with the Conwy 14-19 Network to offer a choice of subjects which will be available to Year 12 learners in Conwy on one day per week during the next school year.

As well as providing a greater variety of subjects to study, the LINC provision helps learners who may not be able to take certain subjects at their own school, either because the subject is not available or because it may clash with another subject. Information on these subjects will be available in a separate booklet at a Sixth

Form Opportunities Evening which is held early in the Spring Term for learners and parents / carers.

These courses include :

- Art & Design - Fashion and Textiles A Level
- Construction BTEC
- Computer Software and Programming BTEC
- Engineering BTEC
- Law BTEC
- Performing Arts BTEC
- Photography A Level
- Psychology A Level
- Public Services BTEC

ENTRY REQUIREMENT



Specific entry requirements and other details are available in the LINC brochure which can be obtained from school.

WHAT STUDENTS THINK



“

Being a part of the Eirias Sixth Form has been a truly exciting time for me. Each day presents itself with new and inspiring challenges to face and grow as an academic and an individual. The teachers and staff have been very supportive of my pursuit to go into further education in competitive courses. Making the most of your time in Sixth Form will lead to one of the most memorable years in your life, as it has done for me.

”

GOKUL

“

Sixth Form has shown me the importance of independent study and the work ethic needed to be successful. The opportunities that Sixth Form offers are extensive to develop the skills necessary in the working world.

”

MEGAN

“

Pursuing my career following high school, I hit a brick wall after trying other sixth forms and college until I came to Ysgol Eirias. The staff are fully supportive and offer a great deal of care and advice for all their students and without the staff here, I wouldn't be pursuing the career path I set out to do.

”

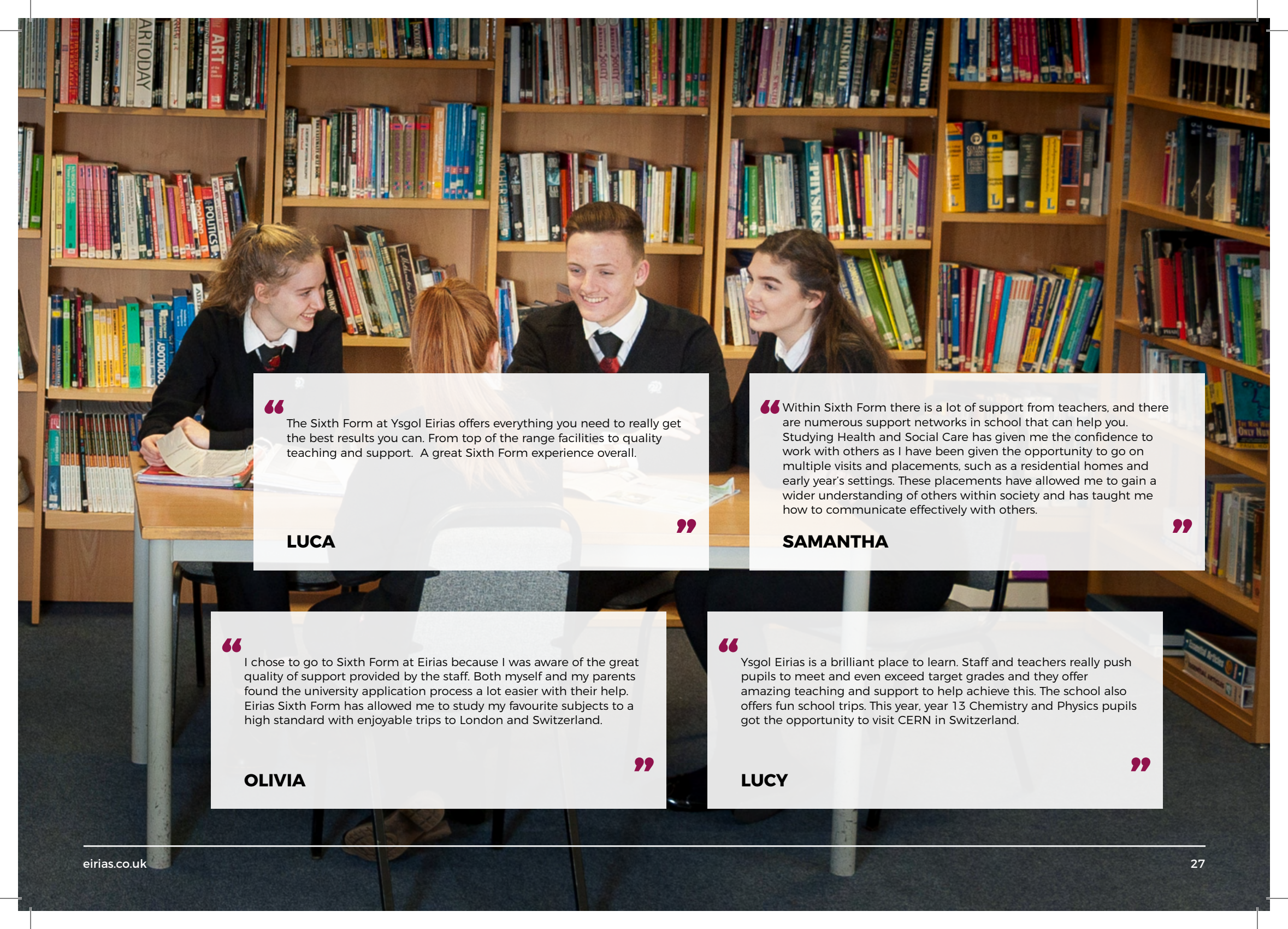
TOM

“

At times, Sixth Form can be very challenging with an intense schedule, however the supervised study sessions have enabled me to balance my work and meet all my deadlines. The support system of the staff has also been incredibly helpful towards my progress on to further study at university.

”

KEZIA

A photograph of four students in school uniforms sitting at a table in a library. They are surrounded by tall bookshelves filled with books. The students are engaged in conversation, with some looking at papers on the table. The lighting is warm and the atmosphere is studious.

“ The Sixth Form at Ysgol Eirias offers everything you need to really get the best results you can. From top of the range facilities to quality teaching and support. A great Sixth Form experience overall. ”

LUCA

“ Within Sixth Form there is a lot of support from teachers, and there are numerous support networks in school that can help you. Studying Health and Social Care has given me the confidence to work with others as I have been given the opportunity to go on multiple visits and placements, such as a residential homes and early year’s settings. These placements have allowed me to gain a wider understanding of others within society and has taught me how to communicate effectively with others. ”

SAMANTHA

“ I chose to go to Sixth Form at Eirias because I was aware of the great quality of support provided by the staff. Both myself and my parents found the university application process a lot easier with their help. Eirias Sixth Form has allowed me to study my favourite subjects to a high standard with enjoyable trips to London and Switzerland. ”

OLIVIA

“ Ysgol Eirias is a brilliant place to learn. Staff and teachers really push pupils to meet and even exceed target grades and they offer amazing teaching and support to help achieve this. The school also offers fun school trips. This year, year 13 Chemistry and Physics pupils got the opportunity to visit CERN in Switzerland. ”

LUCY

SUBJECTS REQUIRED FOR DIFFERENT DEGREE COURSES

Degree Course	Essential A Levels	Useful Subjects
Accountancy, Banking and Finance	A few universities require Mathematics	Maths, Business Studies, Applied Business, Financial Studies, Economics
Actuarial Science	Mathematics	Further Mathematics, Economics, Business Studies
Aeronautical Engineering	Mathematics and Physics	Further Maths, Design Technology
Archaeology	None	Geography, History, Biology, Chemistry, Physics, Environmental Science
Architecture	Some universities want a mix of Arts and Sciences	Art, Maths, Design Technology, Physics, Art and Design
Art	Art or Design Technology	Art, Design Technology, Art Foundation Course
Biochemistry	Chemistry	Biology, Maths, Further Maths, Physics
Biology	Biology	Chemistry, Maths or Physics
Biomedical Sciences	Two from Biology, Chemistry, Maths and Physics. Chemistry essential for some courses	Maths, Further Maths, Biology, Chemistry, Physics, Environmental Science
Chemical Engineering	Chemistry and Maths	Physics, Further Maths, Biology
Chemistry	Chemistry	Biology, Physics, Maths, Further Maths
Computing / Computer Science	Mathematics	Computer Science, Further Maths, Physics
Dentistry	Chemistry and Biology	Maths, Physics, Further Maths
Economics	Mathematics	Economics, History
Electrical / Electronic Engineering	Mathematics, Physics for most courses	Further Maths, Design Technology
Engineering (General and Mechanical)	Mathematics, Physics for many courses	Further Maths, Design Technology
English	English Language or English Literature	History, Philosophy and Ethics, Sociology, Welsh, French, German

Degree Course	Essential A Levels	Useful Subjects
French	French	English Literature, English Language, History, Welsh
Geography	Geography	Biology, Environmental Science, Chemistry, Maths, Physics
Geology / Earth Sciences	2 from Maths, Physics, Environmental Science, Chemistry, Biology	Geography
German	German	English Literature, English Language, History, Welsh
History	History	English Language or Literature, Philosophy and Ethics, French, German, Welsh
Law	None	English, History
Mathematics	Mathematics (Further Mathematics for some Universities)	Further Maths, Physics
Medicine	Chemistry, Biology	Maths, Physics
Nursing and Midwifery	Biology for some courses	Health and Social Care, Chemistry, Sociology, Philosophy and Ethics
Occupational Therapy	Biology for some courses	Health and Social Care, Sport, Sociology, a second Science
Optometry	Biology plus one from Chemistry, Maths, Physics	Further Maths, Environmental Science
Pharmacy	Chemistry, Biology	Maths, Physics, Environmental Science
Physics	Physics, Mathematics	Further Maths, Chemistry
Physiotherapy	Biology plus one from Chemistry, Maths, Physics, Environmental Science	Sport, Chemistry, Maths, Physics, Environmental Science
Psychology	One from Biology, Chemistry, Maths, Physics	Biology, Maths, Sociology
Primary Education	None - but most courses will specify minimum GCSE grades in Maths, English and Science	Maths, English Language or Literature, a Science Subject, Health and Social Care, Welsh for Welsh Universities
Religious Studies / Philosophy	None	Philosophy and Ethics, History, Sociology, English Language or Literature
Sociology	None	Sociology, Geography, History, English Language and Literature
Speech Therapy	Biology, Chemistry, or Physics	French, German, English Language
Sports Science	One from Sport, Biology, Chemistry, Maths, Physics	Sport
Veterinary Science	Biology, Chemistry	Maths, Physics

Please note: This list is by no means exhaustive. There are thousands of university courses available including many joint honours courses which involve more than one subject. Entry requirements can vary significantly between different universities. For more details use the search tool on the UCAS website www.ucas.com/



NOTES

A series of ten horizontal grey bars, each separated by a thin white line, providing a space for handwritten notes.



NOTES

A series of ten horizontal grey bars, each separated by a thin white line, intended for writing notes.



CONTACT

Tel : 01492 532 025
Email : GavinS@Hwbcymru.net

Address : Eirias Road,
Colwyn Bay,
LL29 7SP

www.eirias.co.uk

