

Memory Retrieval Warm up! – Area of Study 1 & 2

- How can you tell the difference between the orchestra in the following periods?:
 - Baroque
 - Classical
 - Romantic

GCSE Revision!

Area of Study 1



Question:

Which Major/Minor Key Signature is this?



Answer:

E Major/C# Minor

Question:

Which Major/Minor Key Signature is this?



Answer:

Eb Major/C Minor

Question:

Which Cadence is this?



Answer:

Imperfect (i.e. any cadence that ends on Chord V = unfinished!)

Question:

Give the letters for the following Structures:
Binary, Ternary, Rondo, Theme and Variations, Strophic

Answer:

AB

ABA

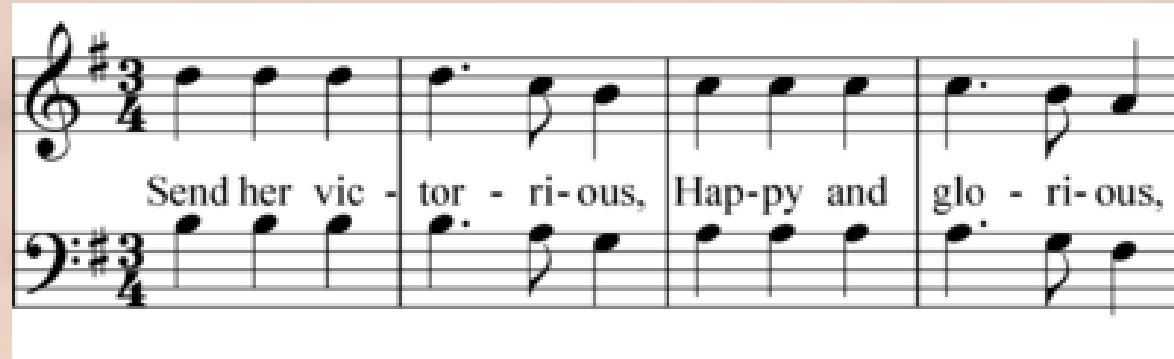
ABACA

AA1A2A3...

AAA

Question:

What is this musical device called?



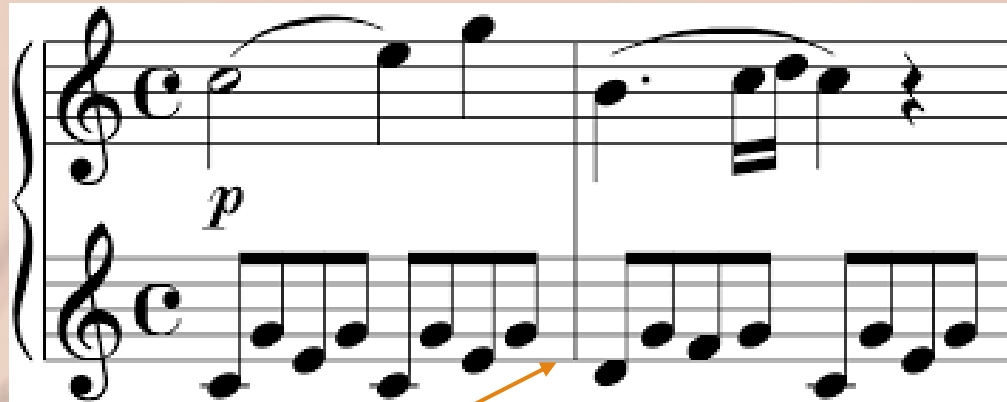
The image shows a musical score snippet in 3/4 time with a key signature of one sharp (F#). The melody is written in the treble clef and consists of four measures. The notes are: G4 (quarter), A4 (quarter), B4 (quarter), C5 (quarter), B4 (quarter), A4 (quarter), G4 (quarter), F#4 (quarter), G4 (quarter), A4 (quarter), B4 (quarter), C5 (quarter), B4 (quarter), A4 (quarter), G4 (quarter), F#4 (quarter), G4 (quarter), A4 (quarter), B4 (quarter), C5 (quarter). The lyrics are: "Send her vic - tor - ri-ous, Hap-py and glo - ri-ous,". The bass line is written in the bass clef and consists of four measures. The notes are: G3 (quarter), A3 (quarter), B3 (quarter), C4 (quarter), B3 (quarter), A3 (quarter), G3 (quarter), F#3 (quarter), G3 (quarter), A3 (quarter), B3 (quarter), C4 (quarter), B3 (quarter), A3 (quarter), G3 (quarter), F#3 (quarter), G3 (quarter), A3 (quarter), B3 (quarter), C4 (quarter).

Answer:

Melodic Sequence

Question:

What is this musical device called?

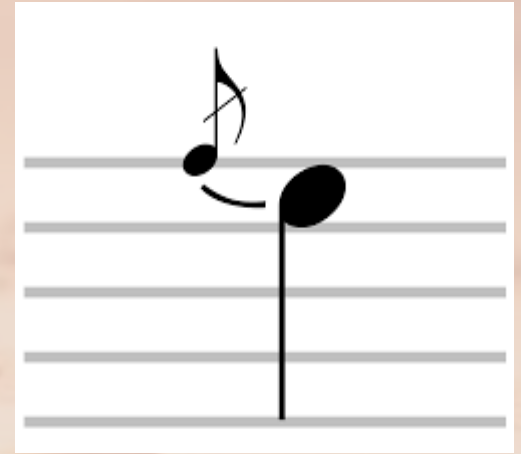
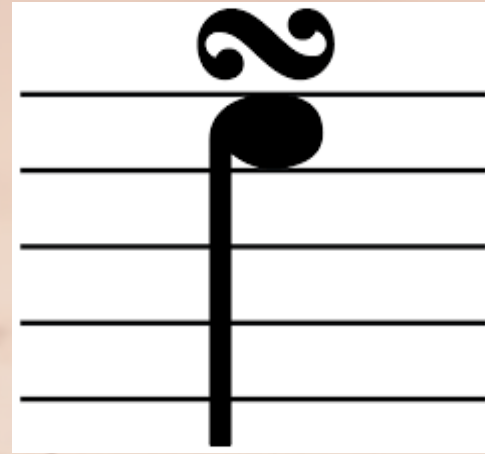
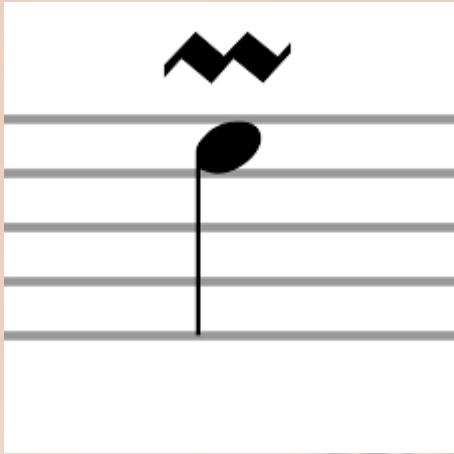


Answer:

Alberti Bass

Question:

Name the 4 ornaments below



Answer:

Mordent

Appoggiatura

Turn

Acciaccatura

Question:

What textural device is shown here?

Overall what type of texture does it create?

Lento, $\text{♩} = 72$

Answer:

Imitation = Polyphonic/Contrapuntal

