

# PREPARING TO STUDY AT GCSE

## A SUBJECT INFORMATION BOOKLET FOR GCSE SUBJECTS AT YSGOL EIRIAS 2024-25



Making curriculum choices in Year 9 is a very important decision as it will shape your time at school for the next two years and beyond. It is also an exciting opportunity to think very carefully about your future aspirations and how you can build upon your strengths to achieve them. Take advice from your current subject teachers and think about the way the course and exams are structured. This process of researching, reflection and discussion is very important as we offer a range of subjects, including some that you have not not studied in Key Stage 3. In Key Stage 4 (Years 10 and 11) all learners must study English, Maths, Numeracy, Double Award Science, the Skills Challenge Certificate and Welsh to GCSE. PE and RS are also statutory. The remaining three subjects are selected from the three option blocks. At the moment you may not be sure about the work you eventually want to do. Even if you do know, you may change your mind over the next few years. It does make extremely good sense for you to choose a range of subjects that will give you a flexible and balanced course. The way we have arranged the core subjects helps you to do this.



For further guidance and support please contact Mr J Knowles (Head of Learning for Year 9)

# **PREPARING TO STUDY AT GCSE**

## **A SUBJECT INFORMATION BOOKLET FOR GCSE SUBJECTS AT YSGOL EIRIAS 2024-25**



**For pupils in Year 9, the choosing of option subjects is an extremely important task. Great care and thought must be put into the process.**



### **How should I choose my options?**

Good reasons for making a particular choice are because you like a subject, because you are good at it or because you will need it for your future job. Do not take a subject just because you like a particular teacher - they may not teach you next year. Also avoid taking a subject just because most of your friends have chosen it. These are YOUR choices and so YOU need to think carefully about what YOU want to do. Read the information in this booklet carefully. You will see there is a separate page for each subject. If the subject you want to study is new to you, you may want to talk to the teacher of that subject. You should discuss your options with your parents. You might want to speak to a careers advisor in which case please ask your form tutor to make an appointment for you. You can also see the information page from Careers Wales in this booklet which has a link to the Careers Wales website. This year we have put together a series of videos, one for each subject area to help you make your choices. You can also ask specific questions at the online Moving Forwards Evening on Tuesday 9th January 2024. More information will be sent to your parents about this at a later date. If you, or your parents, have any problems at all, please do not hesitate to contact Mr J Knowles (knowlesj28@hwbcymru.net)

**Not only will your choices determine the work you do over the next two years, but also it could influence your career possibilities.**

**When you are making your choices you should use all the available resources to help you. Don't decide to take a subject just because your friends are taking it.**

**For further guidance and support please contact Mr J Knowles (Head of Learning for Year 9)**

# PREPARING TO STUDY AT GCSE

## A SUBJECT INFORMATION BOOKLET FOR GCSE SUBJECTS AT YSGOL EIRIAS 2024-25

What will You Study? You already know that some of the subjects you will study are compulsory. These are known as the core subjects. The table below shows you how many lessons of these subjects you will have a week.

Subject	No. of lessons per week
English	4
Maths	4
Science (double award)	6
Cymraeg	3
PE	2
RS	1
Skills Challenge Certificate (SCC)	1

GCSE examinations in RS and PE can be taken as optional subjects. However, you do have to follow Core lessons in PE and RS. During the RS lessons, learners are prepared for the short course examination, which is the equivalent of an extra half GCSE. The remaining nine lessons of the week are made up from the three option subjects you have chosen. Each is taught for three lessons a week.

This subject information booklet is designed to help you in making your GCSE option choices. It also provides information on all of the core subjects so that you have an understanding of all subject courses that you will study. At the bottom of each page you will find the name or names of teachers that can help you with further subject information.

### What do I do now?

Discuss your choices with your parents/carers. Select a subject from each option block. Decide which is your second choice in each block. This will be used if there are insufficient numbers in a subject area to allow your first choice subject to run. Make a note of your first and second choice perhaps using the options form at the back of this booklet. From 9th January 2024 you will be asked to complete an online options form on TEAMS. You must only complete the online form ONCE by the 5th February 2024. If you cannot access Teams please use the option form at the back of the booklet and pass it to your form tutor by 5th February 2024. Spend the time getting your choices right. It's not a race to see who can get their's in first!

For further guidance and support please contact Mr J Knowles (Head of Learning for Year 9)

PREPARING TO STUDY AT GCSE SUPPORT FROM CAREERS WALES



**Are you thinking about what subjects to study at school? Careers Wales can help you with this important decision**



Now that you are in Year 9 you will be starting to think about what subjects to study for your GCSE's in Year 10 and 11. Careers Wales has lots of information, advice and guidance to help you choose the right subjects and to make decisions about next year.

**We can help you:**

- Decide the right subjects for you to study;
- Explore what you are like as a person;
- Discover the jobs that studying different subjects could lead to in the future; Find out more about the world of work.

Our options booklet explains more about choosing the right subjects and options for you,

A copy of our booklet is available on the Careers Wales website

1. Planning Ahead Booklet for Parents 2020.pdf (gov.wales)
2. Choosing Subjects (gov.wales)

If you would like a printed copy please get in touch with your Careers Adviser (Ruth Roberts) on the email address below,

For further information contact Ruth Roberts on  
[ruth.roberts@careerswales.gov.wales](mailto:ruth.roberts@careerswales.gov.wales)

# OPTION SUBJECT

## WJEC ART & DESIGN / CELF A DYLUNIO



### SUBJECT INFORMATION

GCSE ART offers you a fantastic opportunity to express yourself. This exciting course will extend your creativity and provide a range of transferrable skills which are valuable in all aspects of life including the world of work.

Following an introductory unit, you will develop your own portfolio project based on personalised themes. You will explore a great range of processes and techniques and investigate the creative processes of artists. You will experience a range of lesson approaches including practical demonstrations and workshops. Working to your strengths you will also have the opportunity to create work in drawing and painting, printmaking, digital photography and computer generated art and sculpture.

### ASSESSMENT INFORMATION

Coursework = 60% Exam = 40%

Work will be assessed on:

- Drawing and recording from experience and observation
- Artist links and influence on practical work
- Development of ideas through media and processes
- Personal response in final piece

### CAREER OPPORTUNITIES

This course provides a creative grounding and appropriately leads you to A level and beyond to a host of fantastic career opportunities.

Viable and rewarding careers in Art include opportunities within commercial and industrial applications.

Popular careers include: Painter, Sculptor, Animator, Graphic Designer, Ceramicist, Jeweller, Architect, Fashion and Textile Designer, Interior Designer, Photographer, Film Producer, Illustrator and many more. Just look around you; every aspect of life, from clothes to buildings, books to cars, contains artistic input at some level.

### **Further Information:**

Mrs Millington-Cassidy, Head of Art



# OPTION SUBJECT

## WJEC GCSE BUSINESS / TGAU BUSNES



### SUBJECT INFORMATION

Business is all around us and choosing business studies will not only equip you with the skills for future employment, but it will help develop a wide range of transferrable skills that will be really useful elsewhere. These include: problem solving, decision making and a range of mathematical applications. Not only will you be able to talk about making a profit, you will be able to produce the profit and loss account yourself! What will you study? - You will study a wide range of business related topics including:

**Year 10** - Introduction to Business - different types of businesses and how they are formed  
Marketing - how firms promote themselves and carry out market research

People - how businesses are managed and how staff are motivated

**Year 11** - Finance - How do businesses obtain finance and control the money coming in and out of the business

Production - should firms locate in the UK or overseas? What impact is globalization having on businesses?

External Environment - How does taxation affect businesses? What are the main types of legislation and how do they affect how a business is run?

### ASSESSMENT INFORMATION

The subject content will be assessed across two examination papers

**Unit 1** : Business World  
**Unit 2**: Business Perceptions

### CAREER OPPORTUNITIES

Business will provide the basis for the study of a number of subjects at Advanced level and complement well with other subjects such as Mathematics, Geography and Modern Foreign Languages.

Many degree courses offer business or a range of business related courses from Accountancy and Finance to Fashion Management, Marketing and Business and Politics.

**Did you know, Business Graduates are among the highest paid graduates when leaving University?**

### **Further Information:**

Mr D Jones, Head of Business & Communications Faculty

# OPTION SUBJECT

## WJEC COMPUTER SCIENCE / GWYDDONIAETH



### SUBJECT INFORMATION

This carefully planned course gives students a real, in-depth, understanding of how computer technology works. It offers an insight into what goes on "behind the scenes", including hardware, software, networking and programming, which many students find absorbing.

#### **Through this qualification students can**

- Develop their understanding of current and emerging technologies and how they work.
  - Look at the use of algorithms in computer programs.
  - Develop computer programs to solve problems.
- Evaluate the effectiveness of computer programs/solutions and the impact of computer technology in society.

#### **Why choose GCSE Computer Science?**

- It's a great way to develop critical thinking, analysis and problem solving skills which can be transferred to further learning and to everyday life. People who are good at Maths really enjoy many of the topics, which use similar skills.
- Students who want to go on to higher study and employment in the field of computer science will find it provides a superb stepping stone.

### ASSESSMENT INFORMATION

The new assessment split is: 50% written exam, 30% online practical exam, 20% practical controlled assessment (CAT).

### CAREER OPPORTUNITIES

The course will enable students to broaden their logical and analytical skills ready for studying A Level Computer Science in Years 12 and 13.

#### **Further Information:**

Ms E Sime - Teacher of Computer Science

# OPTION SUBJECT

## WJEC GCSE in Digital Technology/ TGAU Technoleg Digidol



### SUBJECT INFORMATION

Digital technologies are electronic tools, systems, devices and resources that generate, store or process data. It is technology that relies on the use of microprocessors; hence, computers and applications that are dependent on computers such as the Internet, as well as other devices such as video cameras, and mobile devices. Well known applications include social media, email and multimedia. The qualification will allow students to develop their understanding of the range of digital technology systems at use in our society. It will also allow students to explore the ever-evolving nature of digital technology systems and how these systems can be used productively, creatively and safely.

**Topics Covered** You will look at a history of digital technology, digital communications and the impact digital technology has had on society as well as more technical aspects of storage and operating systems and data protection. Spreadsheet and desktop publishing software will be used to develop solutions to a range of problems.

**The Units Covered are:** Unit 1 Digital World - Examination - 40%

Unit 2 Digital Practices - Non-exam assessment - 40% You will interrogate a spreadsheet to develop a website to satisfy a client's needs

Unit 3 Communicating in the Digital World - Non-exam assessment - 20%

Candidates will create digital assets related to a set context and then formulate an online digital communications campaign around them.

### ASSESSMENT INFORMATION

The course is assessed through the completion of course work, and 2 written Examinations.

The final qualification awarded is a GCSE and is graded in the following ways A\*, A, B or C

### CAREER OPPORTUNITIES

This course provides a sound understanding of the main areas of information and communication technology and naturally leads on to the Level 3 ICT course within the Sixth Form. Potential career opportunities are varied due to the fact that almost all organisations require information technology to function efficiently.

### **Further Information:**

Mr Lloyd, Head of Digital Technology Mrs G Hughes Teacher of Digital Technology



# OPTION SUBJECT

## WJEC DRAMA



### SUBJECT INFORMATION

GCSE Drama is a course for students who want to develop their acting and performance skills. It involves both practical and written work and aims to develop your confidence in group work and performance on stage. You must have an interest in both performance and theory of Drama as some of the course requires study of plays and written evaluations. You will be expected to perform in front of an audience regularly.

#### **You will develop in the following areas:**

Analysis and study of drama texts, practical skills, responding to stimulus, evaluation of own and others' performance, historical aspects of drama, including the study of theatre practitioners, an enjoyment of live theatre.

#### **Topics covered include:**

Improvisation and theatrical genres, scripted and devised performance, Theatre Practitioners, evaluation of own performance, watching Live theatre and evaluation, exam on set text. You may also be involved in Assemblies, Evening Performances and Concerts throughout the course.

### ASSESSMENT INFORMATION

Assessment will be both written and practical:

- practical assessment of 2 performances, one scripted and one devised 50%
- evaluation of own performances (coursework & exam) 10%
- written examination based on one set text 40%

### CAREER OPPORTUNITIES

Furthering Drama at A Level;  
Performing Arts; Teaching, TV and Film work, Public Speaking;  
confidence in interviews; theatre work behind the scenes; Costume, set design, lighting and sound.

### **Further Information:**

Mrs J Caton, Head of English Faculty or Mrs Howell, Head of Expressive Arts

# OPTION SUBJECT

## WJEC ENGINEERING / PEIRIANNEG



### SUBJECT INFORMATION

**100,000 new Engineering Professionals required per year until 2020!**

GSCE Engineering will provide you with opportunities to link education and the world of work in an engaging, relevant and very practical way. It will teach you how to read technical drawings, how engineered products are designed and made and how to use computers to create products using Computer Aided Design and Manufacture.

During the two years you will look at a variety of engineered products and learn how they are designed, the type of materials they are made from and the processes used to manufacture them. You will also visit engineering establishments to see engineering in the real world. You will also have the opportunity to design your own engineered products using the latest 3D modelling software.

### ASSESSMENT INFORMATION

Exam - 25% (1 hour)  
Controlled Coursework Tasks - 75%

### CAREER OPPORTUNITIES

The course is an excellent foundation for pupils wishing to go onto study: Engineering, Architecture and Design as well as more vocational subjects such as Plumbing, Automotive Studies and Building Services, etc.

### **Further Information:**

Mr M Sherry, Head of Technology Faculty

# OPTION SUBJECT

## WJEC FASHION & TEXTILES / TECSTILIAU A FFASIWN



### SUBJECT INFORMATION

This is an innovative course aimed at pupils who wish to develop their skills and understanding of various textile and fashion styles through practical and theoretical application. The content will include elements of painting and drawing in order to then interpret these images into textile decoration, fashion design and interior design. Students are expected to provide clear evidence of the use of ICT and digital photography. Research into current fashion trends and designers is a large part of any investigations.

**Topics covered:** Candidates should demonstrate an expressive, decorative or functional response through the use of fabrics, dyes and fibres from two or more of the following activities: Fashion studies, Domestic textiles, surface decoration & embroidery, knitting & crochet, felt making, silk painting, textile sculpture, stagecraft, stage and theatre costume design, garment making & body adornment.

### ASSESSMENT INFORMATION

Coursework 60%  
Exam 40%

### CAREER OPPORTUNITIES

Fashion Design, Costume & Theatre Design, Interior Design, International Fashion Buying & Marketing, Fashion Buyer, Fashion Marketing, Fashion Journalism, Fashion Photography, Textile Design, Textile Technology, Surface Pattern Design.

Students who wish to further their studies can progress to Advanced Level in Fashion & Textiles or Art.

This course is suitable for both male and female students.

### **Further Information:**

Mrs N Kenworthy or Mrs M Millington-Cassidy

# OPTION SUBJECT

## WJEC FRENCH / FFRANGEG



### SUBJECT INFORMATION

**The French GCSE Course aims:** To develop the ability to communicate in French  
To form a sound base for further study, work and leisure  
To offer insight into French-speaking culture  
To encourage positive attitudes to foreign-language learning and to speakers of foreign languages.

#### **Topics covered**

The GCSE Course further develops the knowledge, skills and understanding acquired in Key Stage 3.

The following areas are covered:

- Identity & Culture (lifestyle, customs, youth culture)
- Wales & the World (home & locality, France and French speaking countries, global sustainability)
- Study and future employment (current study, world of work, jobs and future plans.

### ASSESSMENT INFORMATION

Listening (25%) Reading (25%)  
Writing (25%) and Speaking (25%)  
All skills are assessed at either Foundation or Higher Tier, a Mixed Tier entry is possible  
The Speaking is carried out by the class teacher and assessed By WJEC

### CAREER OPPORTUNITIES

For those interested in using French in the future, opportunities for further study are available through A-Level courses in Years 12/13. The ability to speak a Modern Language is becoming increasingly valuable in all areas of working life (Banking, Business, Law and Leisure and Tourism, particularly Post-Brexit ). A lack of language skills is considered to be one of the main concerns of employers, so if you have a knowledge of French you are in a very strong position in a competitive job market. Learners who learn French are often in demand.

### **Further Information:**

Miss I Williams, Head of French

# OPTION SUBJECT

## WJEC FOOD & NUTRITION / BWYD A MAETH



### SUBJECT INFORMATION

The WJEC GCSE in Food and Nutrition equips learners with the knowledge, understanding and skills required to cook and apply the principles of food science, nutrition and healthy eating.

**This is practical food course and as such, requires the purchase of ingredients on a weekly basis in order to fulfil the requirements of the course. Pupils will also need the opportunity to cook in their own time to improve their cooking skills, trial recipes and prepare for the practical examinations.**

Core modules : Food Commodities, Principles of Nutrition, Diet and Good Health, Where food comes from, The science of food, cooking and food preparation.

### ASSESSMENT INFORMATION

Controlled Assessment: 60%  
Practical Exam: 40%

### CAREER OPPORTUNITIES

Hospitality and Catering is Britain's fourth largest industry and accounts for around 10% of the total workforce.

The specification builds upon the subject content which is typically taught at Key Stage 3 and provides a suitable foundation to the study of Food and Nutrition at Level 3.

Further Information:  
Miss E Owen



# OPTION SUBJECT

## WJEC GEOGRAPHY / DAEARYDDIAETH



### SUBJECT INFORMATION

**As Michael Palin said "Without Geography you've no direction in life."**

Geography helps you to be more aware of the everyday life and problems of the people who live around you, in other parts of Wales and the United Kingdom and across the world. When you see magazine and TV reports about new shopping centres and factories, unemployment, arguments about new roads, exciting changes or disasters in Asia and Africa, your Geography course will help you to make sense of what is going on.

### ASSESSMENT INFORMATION

The course is split into 2 units covering 6 main themes.

**Unit 1** - 40% Changing Landscapes  
(written exam 1 hour 30 mins)

**Unit 2** - 40% Environment and  
Development issues (written exam 1  
hour 30 minutes)

**Unit 3** - Fieldwork enquiry 20 %  
(2 fieldwork studies will be carried out  
based on Key Questions set by WJEC.  
Assessment will be based on questions  
set by the exam board in a Non-  
Examination report to be written up in  
class)

### CAREER OPPORTUNITIES

Careers linked to Geography are wide and varied and the subject is valued by many Universities. Direct career options may include:  
Cartographer,  
Commercial/residential surveyor,  
Environmental Consultant,  
Geographical Information Systems  
Officer, Planning and Development  
Surveyor, Secondary School  
Teacher, Town Planner,  
International Aid/Development  
Worker, Landscape Architect

### **Further Information:**

Mrs S Marriott, Head of Geography

# OPTION SUBJECT

## WJEC GERMAN / ALMAENEG



### SUBJECT INFORMATION

**The German GCSE Course aims:** To develop the ability to communicate in German  
To form a sound base for further study, work and leisure  
To offer insight into German-speaking culture  
To encourage positive attitudes to foreign-language learning and to speakers of foreign languages.

#### **Topics covered**

The GCSE Course further develops the knowledge, skills and understanding acquired in Key Stage 3.

The following areas are covered:

- Identity & Culture (lifestyle, customs, youth culture)
- Wales & the World (home & locality, Germany and German speaking countries, global sustainability)
- Study and future employment (current study, world of work, jobs and future plans).

### ASSESSMENT INFORMATION

Listening (25%) Reading (25%)  
Writing (25%) and Speaking (25%)  
All skills are assessed at either Foundation or Higher Tier, a Mixed Tier entry is possible.  
The Speaking is carried out by the class teacher and assessed By WJEC

### CAREER OPPORTUNITIES

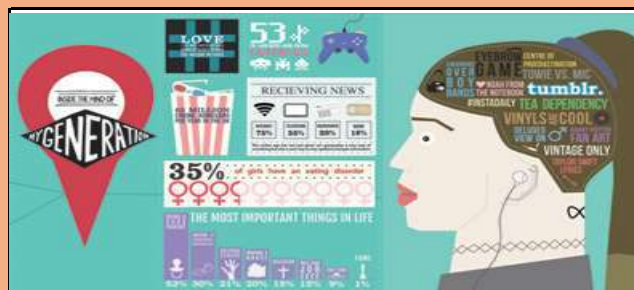
For those interested in using German in the future, opportunities for further study are available through A-Level courses in Years 12/13. The ability to speak a Modern Language is becoming increasingly valuable in all areas of working life (Banking, Business, Law and Leisure and Tourism, particularly Post-Brexit). A lack of language skills is considered to one of the main concerns of employers so if you have a knowledge of German, you are in a very strong position in a competitive job market. Those pupils who learn German are often demand.

#### **Further Information:**

Mrs B Gordon, Head of International Languages

# OPTION SUBJECT

**WJEC GRAPHIC COMMUNICATION / CYFATHREBU GRAFFEG**



## SUBJECT INFORMATION

Graphic Communication is all about using Graphics to get over ideas, feelings, and information in a really visual way. It can involve illustration, photography, calligraphy, web design, advertising, packaging, and multimedia and animation design. It involves finding out about Graphic Designers and their work and using their influences to produce Graphic work in a range of areas from posters to CD covers, T Shirts to display stands and even magazines.

**Techniques:** Sketching, 3D drawing and shading, use of pencils and markers, methods of presentation, image manipulation, typography

**Materials:** Use of graphic and modelling materials like paper, card, foam board thermoplastics.

**Use of Graphics:** How graphics are used within products to aid with advertising and marketing.

**ICT:** Use of Computer Aided Design software, presentation software, DTP, and Computer Aided Manufacture.

## ASSESSMENT INFORMATION

Coursework : 60%

Externally set Assignment: 40%

Work will be assessed on:

- Both drawing and computer design work
- Artist links and influence on practical work
- Development of ideas through media and processes
- Personal response in final piece

## CAREER OPPORTUNITIES

As with other Art & Design subjects, experience in Graphic Communications GCSE can help with careers like Graphic Design, Advertising and Art as well as Architecture, Animation, Product Design and Engineering. Students who wish to further their studies can progress to Advanced Level in Art.

## **Further Information:**

Mrs H Moore or Mrs M Millington Cassidy

# OPTION SUBJECT

## WJEC HEALTH AND SOCIAL CARE, AND CHILDCARE/ IECHYD A GOFAL CYMDEITHASOL, A GOFAL PLANT



### SUBJECT INFORMATION

The specification is designed to give you an opportunity to extend and apply your understanding and skills related to the development and care of individuals through life from conception and infancy to later adulthood. It is aimed at students who wish to work in the caring profession or care for children and want to take their interest further.

This course promotes an understanding of the social, emotional, physical and intellectual development of children linked through the study of the family and community. The course looks at public health and health promotion as well as factors affecting health and well-being across the life cycle. It will offer opportunities for students to develop an understanding of citizenship and understanding of human needs with society. The Core Modules are: Human growth, development and well-being, Promoting and maintaining health and well-being, Health and social care in the 21st century, Promoting and supporting health and well-being to achieve positive outcomes.

### ASSESSMENT INFORMATION

Exam 40 %

Non-Exam Assessments 60%

There are two NEA's investigating:

- Health and social care, and childcare provision in Wales to promote and support health and well-being
- Public health and health promotion across the life cycle
- Factors affecting health and well-being across the life cycle

### CAREER OPPORTUNITIES

You will develop the following transferable skills: Analysis; Practical skills; Observational skills; Research skills.

These will help you to pursue a career within the Care Industry or the profession of Education. This course is also an excellent foundation if you were to consider Health and Social Care as an 6th form choice at Ysgol Eirias.

**Further Information:**

Mrs N Kenworthy

# OPTION SUBJECT

## WJEC HISTORY / HANES



### SUBJECT INFORMATION

**"History isn't just about the past, it is about the present and the future!"**

#### **Topics covered:**

1. Depression, War & Recovery 1930 - 1951 **25%**
2. The USA: A nation of Contrasts 1910 - 1929 **25% (June Y10)**
3. Challenges in Health & Medicine c1340 to the present day **30%**
4. Non Examined Unit **20%**

#### **Skills you will learn to develop:**

You will learn to Use information effectively  
Weigh up conflicting arguments - before coming to a decision  
Be analytical and critical about and why humans behaved as they did, and may behave again in similar circumstances  
How to debate and win arguments

### Assessment Information

Three examination papers worth a total of 80% of the final mark  
Non examined unit will total 20% of the final mark.

**The first exam will be sat at the end of Year 10!**

### CAREER OPPORTUNITIES

We live in a rapidly changing world. Employers and Universities are looking for people who are: Independent thinkers; Open minded; Disciplined; Good at problem solving; Able to pick out essential information. History lends itself to a wide range of careers, here are just some career areas: Law, Politics and Political research, Publishing, Journalism, Media and Writing, Business & Commerce, Public Sector Management & Charity Work.

### **Further Information:**

Miss S Haslehurst, Head of History



# OPTION SUBJECT

## WJEC MUSIC / CERDDORIAETH



### SUBJECT INFORMATION

Do you play an Instrument or Sing and want to improve your performance skills?  
Are you approximately Grade 2-3 standard? Can you already read music notation?

**Then this could be the course for you!**

All students opting for this subject should be able to play an instrument to a good standard (approximately Grade 2-3) and will have regular opportunities to improve their solo and ensemble skills by taking part in class concerts. They will also be expected to participate in one or more of the extra-curricular activities that take place after school including Choir, Gospel Choir and Orchestra.

Taking Music at GCSE level also gives you the opportunity to develop your own creative skills through composition work. In this part of the course you will compose two pieces; one of them will be based on a brief set by the WJEC exam board, the other is a free composition which can be in a style that you choose. For those of you who enjoy Music Technology, up to date software is available for you to use too.

### ASSESSMENT INFORMATION

70% of the course is based on practical work and the production of written evaluations of your performances and composition work. The remaining 30% comes from the listening exam taken at the end of the course which focuses on 4 areas of study: 'Musical Forms', 'Music for Ensemble', 'Film Music', and 'Popular Music'. Throughout the course you will study a wide range of musical works ranging from music written in the Baroque period to the more modern sound of the Manic Street Preachers.

### CAREER OPPORTUNITIES

A Qualification in GCSE Music gives you the chance to go on to study Music or Music Technology at AS/A2 level. This can lead to future career opportunities in the field of Performing Arts, Media Studies, Technology and teaching.

**Further Information:**  
Miss E Hammerton

# OPTION SUBJECT

## WJEC GCSE PHYSICAL EDUCATION / TGAU ADDYSG GORFFOROL



### SUBJECT INFORMATION

You should only consider GCSE PE if your participation in your PE practical lessons is very good and you have a genuine interest in sport and physical activity. You should also be attending extra-curricular sports clubs, either with school or a local club. Key features include one full course specification with 3 practical activities assessed:- (one team game, 1 individual activity and an additional one of either of these). Emphasis is placed on both practical skills and theoretical components. Theoretical focus on:- health, training and exercise; exercise physiology; movement analysis; psychology of sport and physical activity & socio-cultural issues in sport and physical activity. Candidates will also design and undertake an 8 week personal fitness programme for their chosen major activity. Candidates will be required to offer 3 activities from a wide range of practical activities included in the course. You can also use some activities you do outside school e.g. skiing, kayaking or horse riding.

### ASSESSMENT INFORMATION

The course is 50% Practical and 50% Theory. There is an examination. Written Paper - 50%  
2 hours - 30 minute audio-visual paper, 90 minutes written paper.  
Practical activities - 50% (Practical 42%/Personal Fitness Programme 8%)

### CAREER OPPORTUNITIES

Leisure Industry, Sports Science,  
Teaching, Physiotherapy.  
BTEC Diploma in Sports Studies  
GNVQ Leisure  
OCR Cambridge Technical

### **Further Information:**

Mr N Wilkinson, Head of PE Faculty

# OPTION SUBJECT

## WJEC RELIGION & PHILOSOPHY / CREFYDD AC ATHRONIAETH



### SUBJECT INFORMATION

A GCSE in Religion and Philosophy will help you become more aware of what happens every day around the world and make you question some of the big issues in life. You will discover how religious beliefs affect the ways in which believers make decisions about moral and ethical issues. The course is also an excellent basis for moving on to an AS/A2 in the Philosophy and Ethics of Religious Studies.

#### **You will study the following topics:**

Issues of Relationships, life and death, good and evil, human rights, study of Christianity and one other religion.

This will help you learn about:

- The approaches of Religion & Philosophy to some of the fundamental questions about human existence.
- The approaches of religion and ethics to some of the most important questions about how people behave and why.
  - The approaches to Christian beliefs, teachings and practices.
- The approaches to another religion and their beliefs, teachings and practices.

### ASSESSMENT INFORMATION

Formal examination: 100% - Two Papers

### CAREER OPPORTUNITIES

- Many subjects go well with Philosophy and Ethics: for example English, History and Geography.
- Religion and Philosophy can be a useful complement to a Science subjects.
- As with any subject in the area of Humanities, the skills developed in Religion and Philosophy are particularly useful for careers in law, education, politics, medicine, administration or the media.

#### **Further Information:**

Mrs C Davies, Head of Religious Studies

# OPTION SUBJECT

## WJEC PRODUCT DESIGN / DYLUNIO CYNNYRCH



### SUBJECT INFORMATION

Product Design is everywhere. We all use & desire products; they make our lives easier, safer and more fun. On this new course you will:

- \* Design products from concept to final production.
- \* Consider and investigate the market you are targeting
- \* Research, design and make products such as lights, MP3 player docking stations, children's toys & jewellery.
- \* Learn about the materials you can use and how they can be shaped.
- \* Analyse a variety of products, looking at how they are designed trying to guess what the designer thinking was and what innovative features make the product stand out.
- \* Learn valuable project & time management skills.

The major project in Year 11 will account for 50% of your final work.

### ASSESSMENT INFORMATION

Project 50% Exam 50%

### CAREER OPPORTUNITIES

This course is an excellent foundation for those pupils who wish to pursue either an A Level or an AS Level in Design and Technology; Product Design. This forms a strong foundation for those who wish to follow a career in either technical or creative professions such as the Building Industry, Engineering, Mechanics, Architecture, Product Design as well as Graphic Design or Stage/ Television/Theatre Design.

### **Further Information:**

Mr M Sherry, Head of Technology Faculty

# OPTION SUBJECT

## WJEC TOURISM LEVEL 1/2 AWARD / DYFARNIAD LEFEL 1 / 2 TWRISTIAETH



### SUBJECT INFORMATION

The Tourism industry is one of the world's biggest and fastest growing industries. It provides activities for people to enjoy during their leisure time. You will learn that the industry is made up of many different organisations ranging from Theme Parks and Leisure Centres to National Parks and Cinemas. By studying Tourism you will understand the important part that it plays in today's society. It currently employs over three million people in the UK and is worth £126.9bn to the economy.

#### **Topics covered**

The course is made up of three units of study that are completed over the two years of the course. The topics covered include:

- Customer Experience
- The Business of Tourism
- Developing UK Tourist Destinations

### ASSESSMENT INFORMATION

The course is assessed through the completion of controlled assessments and an external examination. One of the controlled assessments will require a visit to a tourist attraction such as Chester zoo.

Controlled Assessment - 75%  
Examination - 25%

### CAREER OPPORTUNITIES

This course provides a sound understanding of the main areas of Tourism and naturally leads on to the Advanced Travel and Tourism course within the Sixth Form.

Potential career opportunities are varied due to the size and diversity of the industry. These include work within Event Management, Hospitality, Travel and many more areas.

#### **Further Information:**

Mrs K Alexander, Head of Humanities



# OPTION SUBJECT

**WJEC LEVEL 1/2 CONSTRUCTION AND BUILT ENVIRONMENT /  
ADEILADU**



## SUBJECT INFORMATION

The Construction industry employs over 3 million people in the UK and offers a diverse range of employment opportunities. Careers are available in all phases of the construction process including designing, planning, building and maintenance of structures. The qualification has been developed to provide individuals with a potential starting point in this highly dynamic industry by using an applied purpose which acts as a focus. This encourages the consideration of how to use and apply knowledge, understanding and skills and how this impacts on individuals, employers, society and the environment. By exploring the industry as a whole, learners are able to develop a range of skills, both practical and academic, that will be useful in the workplace and for future learning. This will provide a foundation of knowledge about the Construction industry that will help learners to progress to further study at a higher level or enter into the workplace.

## ASSESSMENT INFORMATION

The Level 1/2 qualifications have been designed around the concept of a 'Plan, Do, Review' approach to learning. This mirrors many work-related activities in the Construction industry and allows learning to take place in a range of contexts. This approach enables learners to apply and extend their learning.

## CAREER OPPORTUNITIES

Progression on to a Level 3 in Construction which can lead to professional careers such as Surveying, Architecture and Planning or progression on to vocational trades such as Carpentry and Joinery, Bricklaying and Plastering with a view to gaining an apprenticeship.

**Further Information:**  
Mr J Knowles (Head of Learning)

# OPTION SUBJECT

## **CITY & GUILDS LEVEL 2 CERTIFICATE IN HAIR SERVICES / TRIN GWALLT**



### SUBJECT INFORMATION

The C&G L2 Certificate in Hair Services is two qualifications; L2 Scalp Massage in year 1 and L2 Certificate in Hairdressing in year 2. These two qualifications combined will give you knowledge in; The Hair Industry, Health and Safety, Shampooing and Conditioning, Scalp Massage, Consultation with your client, Styling and Creating an Image. In the Creating an Image unit (2year) you will need a model, you will choose an outfit, design the make-up and show your hairdressing skills, you will create a show and have an audience.

### ASSESSMENT INFORMATION

The theory part of the qualification over the two years is by online examinations. There are 4 exams in year 1 and 3 exams in year 2. Practical assessments are ongoing, however you will be formally assessed working with real clients on 6 occasions in the first year and in the second year you will have 9 assessments with your clients.

### CAREER OPPORTUNITIES

There are many career opportunities after the course, you can work in a salon, have your own business, work on a cruise ship and much more!

**Further Information: Mr J Knowles (Head of Learning)**

# OPTION SUBJECT

**BTEC LEVEL 2 FIRST CERTIFICATE IN HEALTH AND SOCIAL CARE /  
IECHYD A GOFAL CYMDEITHASOL**



## SUBJECT INFORMATION

Would you like a career in health and social care? Could you benefit from a practical introductory course? This course gives you a broad introduction to health and social, focusing on the needs of real job roles and situations. It allows you to develop the fundamental skills of the sector, and it brings your knowledge to the required level for a range of careers.

After completing the course, you will be prepared to work in a number of roles, including community support work or care assistant roles. The course also prepares and enables learners to progress to a level 3 qualification and eventual careers including nursing, social work and residential care management.

## ASSESSMENT INFORMATION

The programme will be assessed through a blend of the following:

- Practical and written assessments/assignments
- Presentations and demonstrations
- Portfolios of work
- Performance and observation
- Externally assessed examinations

## CAREER OPPORTUNITIES

Completion of this course improves your employability and gives you important knowledge and skills. It will prepare you for a career in healthcare, social care or childcare, usually after further study.

In education, the course gives you a number of options. You could progress onto a number of courses, including: Childcare Level 3 & Health and Social Care Level 3

## **Further Information:**

Mr J Knowles (Head of Learning)

# CORE SUBJECT

## WJEC CYMRAEG AIL IAITH 2ND LANGUAGE



### SUBJECT INFORMATION

#### **The Cymraeg 2nd Language GCSE Course aims:**

To develop the ability to communicate in Welsh and achieve fluency in the language.

To gain an understanding and appreciation of Welsh culture.

**Topics covered** - the GCSE course further develops the knowledge, skills and understanding acquired in Key Stage 3.

3 main themes: Wales and the World, Youth, World of Work.

Students who follow the 'Carlam' course in KS3 will study the GCSE in Year 10 and the Welsh 2nd Language AS in Year 11. MAT students will have the opportunity to follow the Carlam course in KS4 depending on their KS3 level.

### ASSESSMENT INFORMATION

#### **Course Structure**

**Unit 1** - Oracy response to visual stimulus (25% - Year 10)

**Unit 2** - Group Oral (25% - Year 11)

**Unit 3** - Reading and Writing (25% - Year 11)

**Unit 4** - Reading and Writing (25% - Year 11)

### CAREER OPPORTUNITIES

All public sector organisations in Wales are legally bound to provide services in both Welsh and English and many private companies do so because it's good for business. This makes Welsh-speaking employees a very attractive asset to companies. It also creates new opportunities. Research shows that employees with bilingual skills are more likely to earn a salary 8-10% higher than workers without bilingual skills.

#### **Further Information:**

Mrs L Newman, Head of Cymraeg Faculty

# CORE SUBJECT

## WJEC ENGLISH / SAESNEG



### SUBJECT INFORMATION

English Language GCSE involves: Reading a range of texts, proof reading and editing, creative and persuasive writing tasks. Studying a range of novels, plays and poetry, taking part in discussion work and drama based activities. We study a variety of topics towards each of the GCSEs of Language and Literature, providing a wide range of texts, the opportunity to read critically, improve own writing, spell accurately, acquire and apply a wide vocabulary. It will also prepare learners to make informed decisions about further learning opportunities and career choices. Through our English lessons, we also cover the Individual Project element of the Skills Challenge Certificate, which contributes to the development of reading and writing skills.

### ASSESSMENT INFORMATION

English Language GCSE:  
Unit 1 - 20% Speaking and Listening. One individual presentation and one group discussion.  
Unit 2 - 40% Written exam  
  
Unit 3 - 40% Written exam  
English Literature GCSE:  
  
Unit 1 - Written exam 35%  
Unit 2 - Written exam 40%  
Unit 3 - Coursework 25%



### Further Information:

Mrs J Caton, Head of English Faculty



# CORE SUBJECT

**WJEC Mathematics and Numeracy/Mathemateg a Rhifedd**



## SUBJECT INFORMATION

This Mathematics and Numeracy GCSE specification will encourage learners to be inspired, moved and challenged by following a broad, coherent, satisfying and worthwhile course of study. It will help learners to develop confidence in, and a positive attitude towards, mathematics and to recognise the importance and relevance of mathematics to their everyday lives and to society. It will enable learners to appreciate the coherence, creativity, elegance and power of mathematics. It will also prepare learners to make informed decisions about further learning opportunities and career choices. It will have an emphasis on those aspects of mathematics required for progression into mathematics or mathematically-related disciplines or employment routes. It will feature problems set both in real-world contexts and within mathematics itself and will encourage learners to employ and evaluate different mathematical techniques

## ASSESSMENT INFORMATION

There are 3 tiers of entry for the Numeracy and Mathematics qualification.

Higher Tier: Grades A\* - C

Intermediate Tier: Grades B - E

Foundation Tier: Grades D - G

All tiers are 100% examinable. Each tier is split into 2 parts carrying equal weighting. Unit 1: Non Calculator and Unit 2: Calculator Allowed

## CAREER OPPORTUNITIES

Career opportunities are many and varied:

Accountancy

The Actuarial Profession

Banking - Investment Banking

Banking - Retail Banking

Computing & IT

Engineering Sciences

General Management

Operational research

Postgraduate Study

Statistical research

Teaching

## **Further Information:**

Miss C. Richardson, Head of Mathematics Faculty

# CORE SUBJECT

## WJEC SCIENCE DOUBLE AWARD / GWYDDONIAETH DWBL



### SUBJECT INFORMATION

This WJEC GCSE Science Double Award course provides a broad, coherent, course of study that encourages learners to develop confidence in, and a positive attitude towards, science and to recognise its importance in their own lives and to society.

Studying GCSE Science Double Award provides the foundations for understanding the material world. Scientific understanding is changing our lives and is vital to the world's future prosperity, and all learners should be taught essential aspects of the knowledge, methods, processes and uses of science. They should be helped to appreciate how the complex and diverse phenomena of the natural world can be described in terms of a small number of key ideas relating to the sciences which are both inter-linked, and are of universal application.

### ASSESSMENT INFORMATION

The GCSE Double Award Science course has 7 areas of assessment. Each student will sit 3 external written examinations in June of Year 10, each worth 15% of the overall grade. They will have 2 practical exams in Jan/Feb of their Year 11 worth 10% of the overall GCSE. In May of their Year 11 they will sit 3 written external examinations each worth 15%

### CAREER OPPORTUNITIES

A Science GCSE is a gateway to many areas of further study to name a few: Medicine, Veterinary, Engineering, Forensic Science, Teaching as well as showing a breadth of knowledge to other areas

### **Further Information:**

Miss S Taylor, Head of Science Faculty

# CORE SUBJECT

## PHYSICAL EDUCATION (PE) / ADDYSG GORFFOROL



### SUBJECT INFORMATION

In Key Stage 4 pupils will have a double PE lesson and will be offered a range of activities each half term to enable them to design their own programme of study. Additionally all pupils will undertake an environmental impact day where they will work in the local community to improve the environment. Prior to and following the work done on this day all pupils will complete the Skills Challenge Certificate towards their Welsh Baccalaureate qualification, with some aspects being completed in Core PE lessons in year 10 and some being undertaken in bespoke skills lessons in year 11.

#### Assessment information

##### YEAR 10

- Task 1 - Personal Skills Audit
- Task 2 - Planning, target setting, identifying risk, allocating roles
- Task 3 - Completion of Environmental Impact Day

##### YEAR 11

- Task 4 - Personal reflection & data analysis

#### CAREER OPPORTUNITIES

Armed Forces, Emergency Services, Sports Development, Sports Coaching, Teaching.

#### **Further Information:**

Linked to WBACC GCSE Qualification.

# CORE SUBJECT

**WJEC RELIGIOUS STUDIES (SHORT COURSE) /  
ASTUDIAETHAU CREFYDDOL**



## SUBJECT INFORMATION

Students will study Christian and Muslim beliefs, teachings and practices. Students will also study two philosophical themes of life and death. In these themes they will be looking at stewardship, abortion, euthanasia, afterlife, crime and punishment, treatment of criminals, death penalty, forgiveness, good, evil and suffering.

## ASSESSMENT INFORMATION

Students will sit one 2 hour written exam at the end of year 11 worth 100%.

## CAREER OPPORTUNITIES

Law, education, politics, medicine, administration.

**Further Information:**  
Mrs C Davies, Head of Religious Studies

# CORE SUBJECT

## WJEC Skills Challenge Certificate/Tystysgrif her sgiliau



### SUBJECT INFORMATION

All learners will complete the Skills Challenge, this is one of the core requirements to achieve the full Welsh Baccalaureate. The full Welsh Baccalaureate can be achieved at two levels, National and Foundation. At National level students must achieve The Skills Challenge, English Language and Maths/Numeracy at A\*-C grade plus 3 other GCSE A\*-C grades.

The Skills Challenge holds a standalone GCSE grade and is a skills qualification that will be delivered in a combination of discrete Skills Challenge lessons alongside integrated assessment in a range of core subjects. The key focus of this qualification is to develop individual skills within a range of different contexts to allow learners opportunities to develop skills for life and work.

#### Assessment Information

There are four key assessments within the Skills Challenge:

**Year 10 Skills lesson:** The Enterprise and Employability Challenge (20% of final grade)

**Year 10 Core PE:** The Community Challenge (15% of final grade)

**Core RS:** The Global Citizen Challenge (15% of final grade)

**Year 10 & 11 Core English:** Individual Project (50% of final grade)

The Skills Challenge is an ongoing assessment course based on controlled assessment tasks and coursework, there are no external examinations

#### CAREER OPPORTUNITIES

The Skills Challenge develops a broad range of skills that employers and post compulsory education establishments have identified as vital for continued success and as such the Skills Challenge is a qualification that is applicable to all careers from medicine to mechanics, electricians to engineers and everything in-between. Students who achieve the full Welsh Baccalaureate demonstrate a combination of skills and academic knowledge which will allow them to progress in any career path they choose.

#### **Further Information:**

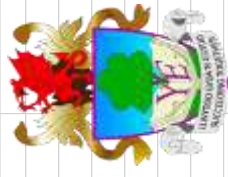
Miss Haslehurst Head of Skills KS3/4



## Year 9 Options 2024

### Remember

Core subjects: Maths/English/Science/Welsh/Core PE/RS short course/Welsh Baccalaureate (The Skills Challenge) are compulsory subjects for everyone  
Forms will be released shortly online where you will complete your selection.  
A series of "Into GCSE - Moving Forwards" videos can also be found on your form group Teams.  
To discuss a subject in more detail we are holding a Moving Forwards Evening on January 9th 17:30 - 19:30 at school.



**Only indicate one 1st choice and one 2nd choice for each option block.**

	Option POOL 1		Option POOL 2		Option POOL 3	
	Put a 1 against your FIRST Choice	Put a 2 against your SECOND choice	Put a 1 against your FIRST Choice	Put a 2 against your SECOND choice	Put a 1 against your FIRST Choice	Put a 2 against your SECOND choice
Geography			History		Art	
History			French		Business Studies	
Digital Technology (ICT)			Digital Technology		Computer Studies	
Drama			Business Studies		Health & SC Child Devel	
French			Food & Nutrition		Religion and Philosophy	
Graphics			German		GCSE PE	
Tourism			Music		Engineering	
Product Design			Textile Designs		Geography	
Art						

### College Courses

*These courses take place one day a week at Llandrillo College. You may be required to get yourself to Llandrillo College. It may be possible, but not guaranteed, that you could take one of the options subjects. Please show your option choices in each pool as well.*

*All core subjects will still be studied in school on the other four days.*

Minimum numbers are required for these college courses to run.

You should select this course if it is your FIRST CHOICE of any subject

Please Indicate your FIRST CHOICE ONLY

Course	YOUR CHOICE
Level 2 Construction	
Level 1/2 Certificate in Health & Social Care	
Level 2 Certificate in Hair Services	

# OPTION SUBJECT

## **Agored Cymru - Essential Skills for Work and Life/Sgiliau Hanfodol (Entry 3 - Level 2)**



### SUBJECT INFORMATION

This course is designed to support learners with Additional Learning Needs. It supports the development of literacy and numeracy skills needed for education, work and life and provides a focus specifically on the skills needed in the areas 'Communication' and 'Application of Number'.

The qualification will be made up of individual units which will be chosen to meet the needs of the learner and their ability.

### ASSESSMENT INFORMATION

Assessment of the individual units will be through ongoing classwork and verified by Internal and External Verifiers

### CAREER OPPORTUNITIES

Agored Cymru qualifications are widely recognised, valued and respected by employers and Further Education Establishments. The Agored Cymru credits gained through this qualification can be accredited to other courses which may be studied in College or Employment and build towards future qualifications.

**Further Information:**  
Mrs E Gunby (AN Dept)

# OPTION SUBJECT

**Sweet: BTEC Level1/2 in Personal & Social Development/ Datblgiod Personol a Chymdeithosol**



## SUBJECT INFORMATION

What is Sweet\*?

Sweet\* is a learning and skills development programme offering a specialist BTEC Level 1 or 2 qualification in Personal & Social Development (PSD).

Who is it for?

The qualification is tailored to suit learners of all abilities.

Topic Covered:

Fitter, Healthier, Happier - Physical health and well-being

I've got a feeling - Emotional Well-being

Skills for Social success - Social Health and Well-being

Let's Talk About - Sexual Health and Well-being

This is me - Personal Identity

Our World, Our Future - Environmental Awareness

Making Money Work For Me - Financial Awareness

Future Roles and Setting Goals - Personal Progress

## ASSESSMENT INFORMATION

Portfolio Based Sweet\* is a high quality, fully resourced package with a portfolio based approach to assessment involving no examination.

## CAREER OPPORTUNITIES

After completing the qualification at Level 2, students will gain the equivalent to a full GCSE A\*-C grade. This can then be used to apply for college.

## **Further Information:**

Mr J Evans (Head of Inclusion)