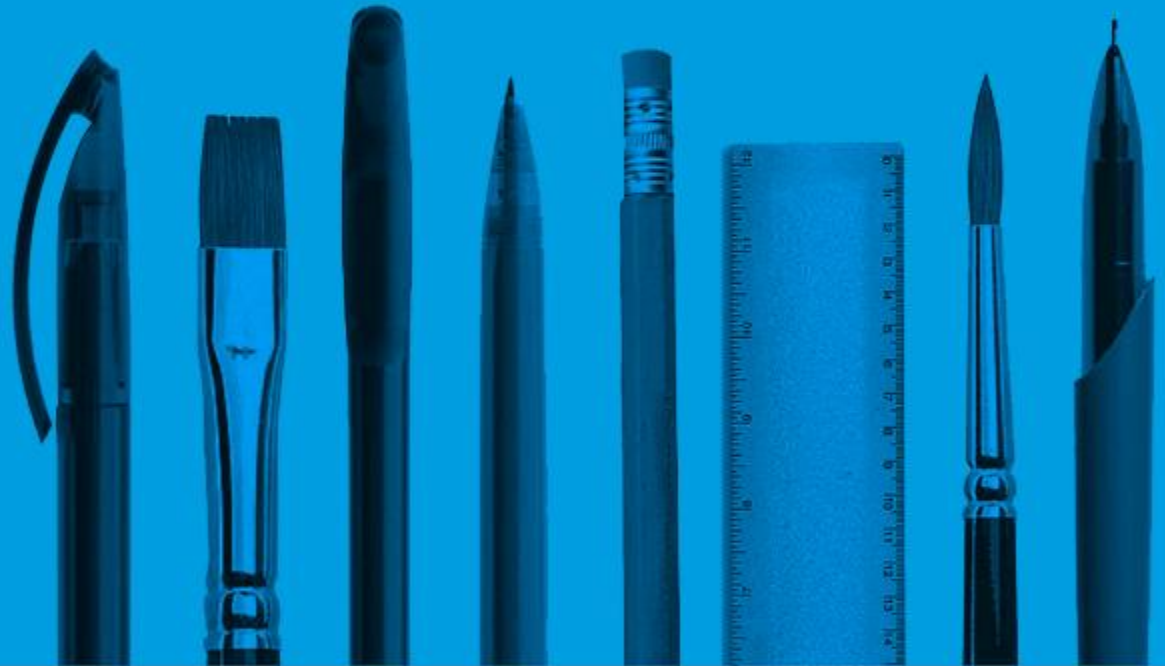


# GCSE History

## Exam walk through

### Unit 1 Study in Depth



## You will need with you:

- A copy of the summer 2019 Depression, War and Recovery examination paper or any of the 2019 Unit 1 Study in Depth papers.
- A black ink pen and a highlighter pen.



# What should I do first?

## Read the front cover of the exam paper.

Surname	Centre Number	Candidate Number
Other Names		0



GCSE – **NEW**

3100UC0-1



**HISTORY**  
**Unit 1: Study in Depth**  
**Wales and the Wider Perspective**

**1C. Depression, War and Recovery, 1930-1951**

MONDAY, 3 JUNE 2019 – MORNING

Note the time



1 hour

Please note this –  
 it is very  
 important



**INSTRUCTIONS TO CANDIDATES**

Use black ink or black ball-point pen. Do not use pencil or gel pen. Do not use correction fluid.

Write your name, centre number and candidate number in the spaces at the top of this page.

Answer **ALL** the questions on the examination paper.

Write your answers in the spaces provided in this booklet. If you run out of space, use the additional page(s) at the back of this booklet, taking care to number the question(s) correctly.

**INFORMATION FOR CANDIDATES**

The number of marks is given in brackets at the end of each question.

Question 5 will assess your ability to construct a balanced, reasoned and well-substantiated extended response.

In addition, your answer to question 5 will assess your ability to spell, punctuate and use grammar accurately and use a wide range of specialist language as appropriate.

For Examiner's use only		
Question	Maximum Mark	Mark Awarded
1.	4	
2.	6	
3.	12	
4.	12	
5.	16	
SPaG	3	
<b>Total</b>	<b>53</b>	



This is the total  
 mark for the  
 paper



# Answering Question 1

Answer all questions.

## QUESTION 1

This question is about life during the Depression.

Study the sources below and then answer the question which follows.

### Source A

There is an industrial depression unlike anything ever seen before in Jarrow. The shipyard and the steelworks have closed down. There used to be 8 000 people, many of them skilled workers, employed in Jarrow, now only 100 men are employed on a temporary basis. We want more jobs for Jarrow.

[From a petition presented to the government by the Jarrow Crusaders]

### Source B



[Unemployed workers on their march from Jarrow to London in 1936]

What can be learnt from Sources A and B about the Jarrow Crusade?

Examiner  
only

[4]

The key instruction here is "what can be learnt"



This question is worth 4 marks



# Answering Question 2

## QUESTION 2

This question is about life during wartime.

Study the source below and then answer the question which follows.

### Source C

The legend of British self-control and calm under fire is being destroyed. All reports from London agree that people are seized by fear. The 7 million Londoners run about the streets not knowing what to do and are victims of bombs and bursting shells.

[A report on a German radio station, broadcast in both Germany and Britain on the 18<sup>th</sup> September, 1940]

To what extent does this source accurately explain the effect of the Blitz on the people of Britain? [6]

*[In your answer you should refer to the strengths and limitations of the source and use your own knowledge and understanding of the historical context.]*

The key instructions here are “to what extent” and “accurately explain”.

Examiner only

Examiner only

This question is worth 6 marks

2
4
Total

# Answering Question 3

## QUESTION 3

This question is about the coming of war.

Why was the German invasion of Czechoslovakia in March 1939 significant to Britain? [12]

Examiner only

The key instructions here are “why” and “significant”.

Examiner only

This question is worth 12 marks

3106/001  
01



# Answering Question 4

## QUESTION 4

This question is about keeping up morale.

Explain the connections between any THREE of the following:

[12]

- Propaganda posters
- Winston Churchill
- Radio and cinema
- The Dig For Victory campaign

Your three choices:

- .....
- .....
- .....

The key instruction here is “explain the connections”.


Examiner  
only

Examiner  
only

This question is worth 12 marks



2
10
12



# Answering Question 5

## QUESTION 5

This question is about life after war.

Read the interpretation below and then answer the question which follows.

By the end of World War II, the British public were crying out for change. Labour would lead that change. Our manifesto 'Let us Face the Future' laid out a bold vision, pledging to destroy the 'five evil giants' such as want, disease and unemployment. It was a message which captured the imagination of the country and took Clement Attlee into Number 10.

[An extract from an article on the 1945 General Election published on the Labour Party's official website in 2015]

How far do you agree with this interpretation of the reasons why the Labour Party won the General Election in 1945? [16]

*[In your answer you should refer to how and why interpretations of this issue differ. Use your own knowledge and understanding of the wider historical debate over this issue to reach a well-supported judgement.]*

*Marks for spelling, punctuation and the accurate use of grammar and specialist language are allocated to this question.* [3]

The key instruction here is "how far do you agree".

Examiner only

Examiner only

This question is worth 16 marks

However, it is very important to note that an additional 3 marks are available for the quality of your spelling, punctuation and grammar

END OF PAPER

4
12
Total
3



# Cwestiynau? | Any Questions?

Do you have any further questions about this examination?

If so, write them on a post-it note and stick it to the front of your paper to give to your teacher.

