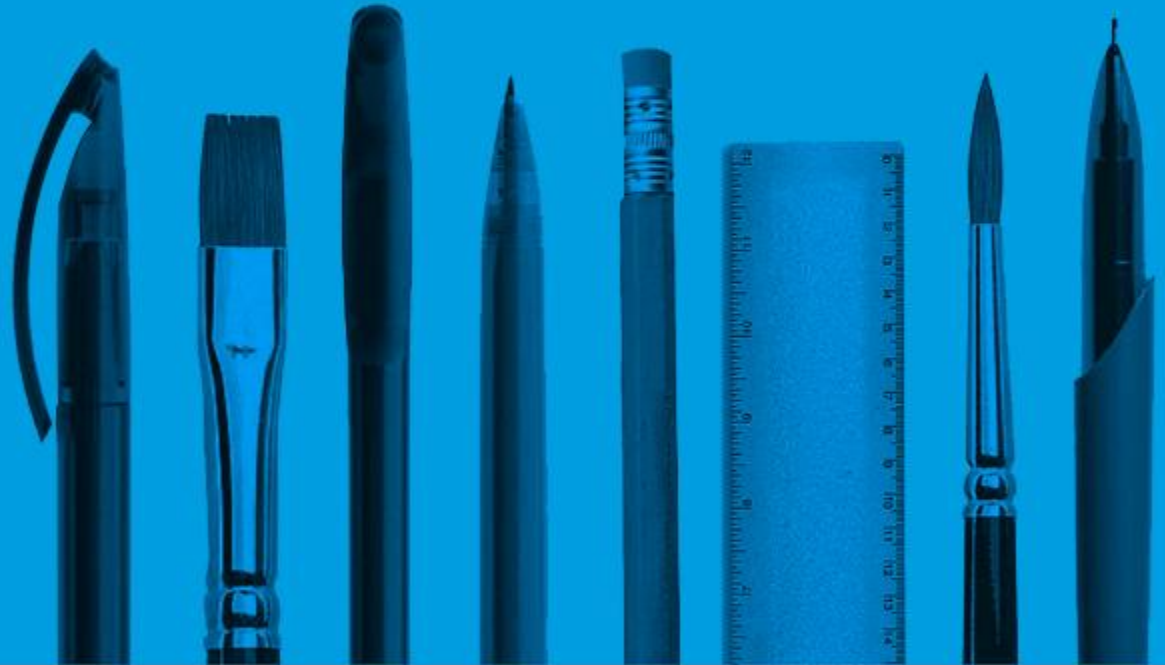


GCSE History

Exam walk through

Unit 3 Thematic Studies



You will need with you:

- A copy of the summer 2019 Crime and Punishment examination paper or any of the 2019 thematic papers.
- A black ink pen and a highlighter pen.



What should I do first?

Read the front cover of the exam paper.

Surname	Centre Number	Candidate Number
Other Names		0



GCSE – NEW

3100UJ0-1



S19-3100UJ0-1

HISTORY
Unit 3: Thematic Study

**3A. Changes in Crime and Punishment,
c.1500 to the Present Day**

TUESDAY, 11 JUNE 2019 – AFTERNOON

1 hour 15 minutes

Note the time →

For Examiner's use only		
Question	Maximum Mark	Mark Awarded
1.	4	
2.	4	
3.	6	
4.	6	
5.	12	
6.	12	
7.	16	
SPaG	4	
Total	64	

← This is the total mark for the paper

INSTRUCTIONS TO CANDIDATES

Use black ink or black ball-point pen. Do not use pencil or gel pen. Do not use correction fluid.

Write your name, centre number and candidate number in the spaces at the top of this page.

Answer ALL the questions on the examination paper.

Write your answers in the spaces provided in this booklet. If you run out of space, use the additional page(s) at the back of this booklet, taking care to number the question(s) correctly.

INFORMATION FOR CANDIDATES

The number of marks is given in brackets at the end of each question.

Question 7 will assess your ability to construct a balanced, reasoned and well-substantiated extended response.

In addition, your answer to question 7 will assess your ability to spell, punctuate and use grammar accurately and use a wide range of specialist language as appropriate.

Please note this – it is very important →



JUN193100UJ0101



Answering Question 1

Answer all questions.

QUESTION 1

Complete the sentences below with an accurate term. [4]

(a) During the Middle Ages, offenders were often punished in public by being put in wooden frames called

(b) During the 18th century, many wealthy travellers in stagecoaches were held up and robbed by

(c) In the 18th and 19th centuries, many people convicted of offences were transported by ship to

(d) In 19th-century prisons, the practice of not allowing prisoners to communicate with each other was known as the

Examiner only

10700018

4

Do not spend too much time on these questions

Together they are worth only 4 marks



Answering Question 2

QUESTION 2

This question is about the nature of crimes.

Look at Sources A, B and C, which show different crimes over time, and answer the question that follows.

Source A



[Luddite rioters in the early 19th century]

Source B



[Rebecca rioters in the 1840s]

Source C



[Miners' wives being arrested during the miners' strike in 1984]

Look carefully at all three sources and the information beneath them

Use Sources A, B and C to identify **one** similarity and **one** difference in the nature of crime over time. [4]

[Use at least two of the sources to answer the question.]

This question is worth 4 marks

Examiner only

31800101
1/1

2
2

Total

--



Answering Question 3

QUESTION 3	Examiner only		
<p>This question is about methods of punishment.</p> <p>Describe the work of Elizabeth Fry.</p> <hr style="border-top: 1px dotted black;"/>	[6]		
	<table border="1"><tr><td style="width: 20px; height: 20px;"></td></tr><tr><td style="text-align: center;">6</td></tr></table>		6
6			

This question is worth 6 marks

The key instruction here is “describe”



Answering Question 4

QUESTION 4	Examiner only		
<p>This question is about the study of an historic environment connected with crime and punishment.</p> <p>Describe the living conditions that led to an increase in crime in Merthyr in the 19th century. [6]</p> <hr style="border-top: 1px dotted black;"/>			
	<table border="1"><tr><td style="width: 20px; height: 20px;"></td></tr><tr><td style="text-align: center;">6</td></tr></table>		6
6			

This question is worth 6 marks

The key instruction here is “describe”



Answering Question 5

QUESTION 5			
<p>This question is about the causes of crime.</p> <p>Explain why there was an increase in crime in the Tudor period.</p> <hr/>	Examiner only		
	[12]		
	<table border="1"><tr><td>2</td></tr><tr><td>10</td></tr></table>	2	10
2			
10			
	Total		
	<input type="text"/>		

This question is worth 12 marks

The key instruction here is “explain why”



Answering Question 6

QUESTION 6	<small>Examiner only</small>				
<p>This question is about attitudes to punishment.</p> <p>How significant were changes in attitudes to punishment during the 20th century? [12]</p> <hr style="border-top: 1px dotted black;"/>					
	<table border="1"><tr><td style="text-align: center;">2</td></tr><tr><td style="text-align: center;">10</td></tr><tr><td style="text-align: center;">Total</td></tr><tr><td style="text-align: center;"><input type="text"/></td></tr></table>	2	10	Total	<input type="text"/>
2					
10					
Total					
<input type="text"/>					

This question is worth 12 marks

The key instruction here is “how significant”



Answering Question 7

QUESTION 7

This question is about methods of combating crime.

Have methods of combating crime always been successful over time? [16]

In your answer you should:

- show how methods of combating crime have been successful over three historical eras
- discuss the variations in the extent of success over three historical eras
- include direct references to the history of Wales.

Marks for spelling, punctuation and the accurate use of grammar and specialist language are allocated to this question. [4]

.....

END OF PAPER

Examiner only

<input checked="" type="checkbox"/>	6
<input checked="" type="checkbox"/>	10
<input type="checkbox"/>	Total
<input type="checkbox"/>	SPaG
<input checked="" type="checkbox"/>	4

← This question is worth 16 marks

← However, it is very important to note that an additional 4 marks are available for the quality of your spelling, punctuation and grammar

Please remember to include examples from Welsh history



Cwestiynau? | Any Questions?

Do you have any further questions about this examination?

If so, write them on a post-it note and stick it to the front of your paper to give to your teacher.

