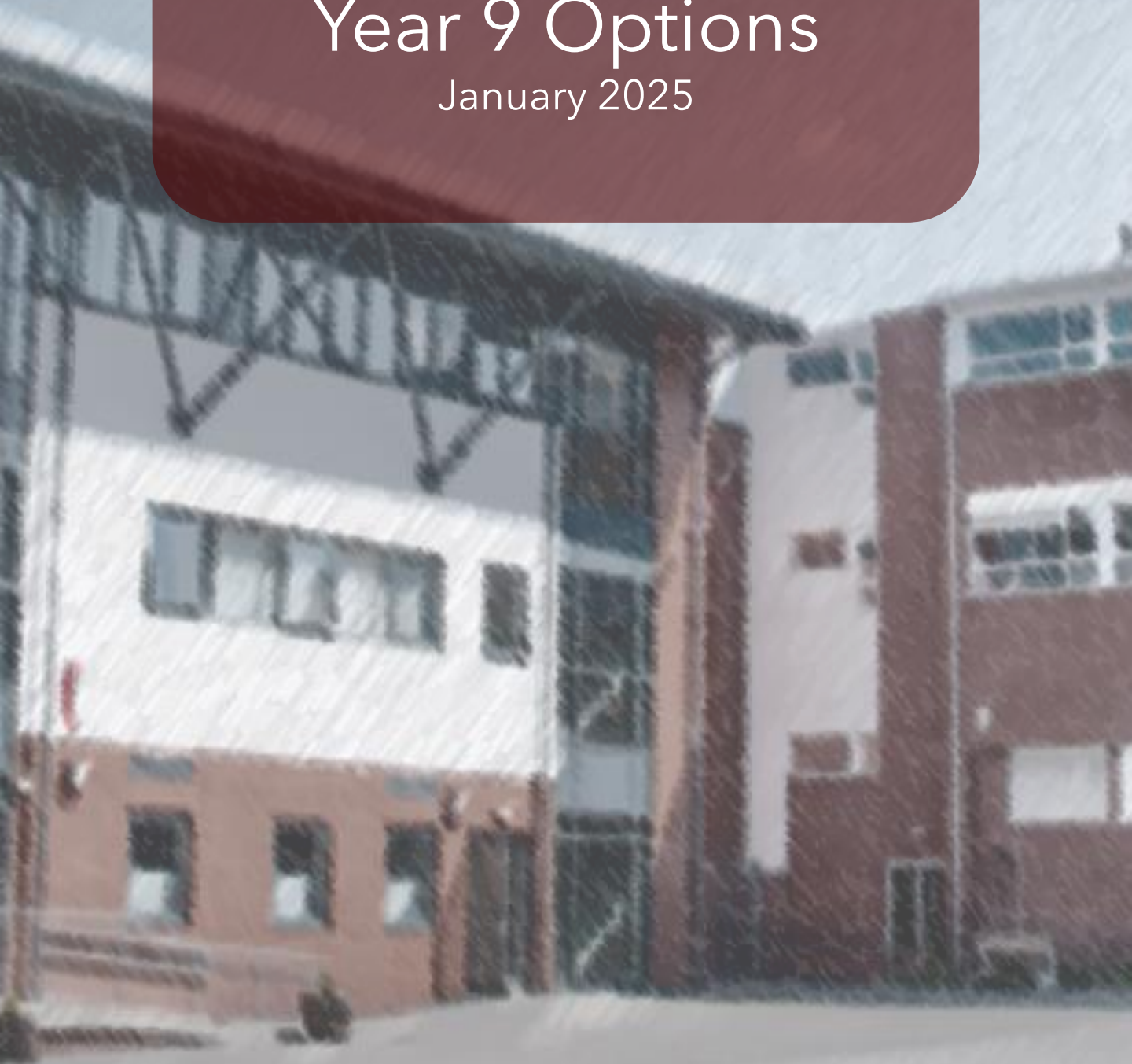


Ysgol Eirias

Year 9 Options

January 2025





Welcome to the Year 9 Options booklet

In year 10 all learners begin their GCSE courses. This means that students begin to specialise the things that they study in order to follow the things that they are good at, they enjoy and they want to study further. Making the right choices is vital here, and this booklet is designed to help you make the right decisions over your future study. Use this booklet to discover the different options which exist for you, and to discuss the subjects with your families to help you make the right choices.

Learning is divided into 6 Areas of Learning and Experience, and under the Curriculum for Wales all students are expected to do some study in each area. At Ysgol Eirias we aim for you to get the best possible experience from your learning in all 6 areas.

For all pupils in year 9 choosing your options is a very important process, and great care and thought must be put into this process.

In this booklet there is information about each of the subjects you can choose, as well as information about the compulsory subjects which are referred to as the core subjects. This is to help you choose the right subjects for you.

The deadline for the final choices is February the 10th.

If you have any questions or need further support please contact your head of year Miss Beards.

History

Humanities AOLE



This GCSE in History explores events from local, national and worldwide viewpoints. Allowing you to make enquires across three periods of time. The three main areas covered are:

Unit 1: Wales and the early Tudors c.1485-1547

Unit 2: The Black Death: A Case Study in medieval society

Unit 3: Changes in US Society c.1880-1980

Unit 4: A changing society: focusing on British History

There are two examinations and two pieces of Non Examined Assessment (NEA) across the two years.

Unit 1: 30% examination

Unit 2 : 20% NEA completed in Year 10

Unit 3: 30% examination

Unit 4: 20% NEA completed in Year 11

Employers and Universities are looking for people who are:
independent thinkers; open minded;
disciplined; good at problem solving; able to pick out essential information.

History lends itself to a wide range of careers, here are just some career areas:

Law, Politics and Political research,
Publishing, Journalism, Media,
Business, Public Sector Management
& Charity Work.

For further information please contact Miss S Haslehurst



Geography

Humanities AOLE



GCSE Geography supports learners to become independent, balanced and sympathetic geographers, with an understanding of the changing world. Learners will appreciate the complex and diverse nature of societies and physical landscapes, understanding the interrelationships between people and their environment. Geography will foster a curiosity to explore geographical issues and make sense of the world to work towards a sustainable future.

Unit 1: Our Physical and Human World

Written examination: 1 hour 30 minutes

30% of qualification

Unit 2: Developing Fieldwork Skills

Non-examination assessment: fieldwork based

25% of qualification

Unit 3: Our Dynamic and Diverse World

Written examination: 1 hour 30 minutes

30% of qualification

Unit 4: Sustainable Solutions

Non-examination assessment
15% of qualification

Careers linked to Geography are wide and varied and the subject is valued by many Universities.

Direct career options may include:

Cartographer,
Commercial/residential surveyor,
Environmental Consultant,
Geographical Information Systems Officer, Planning and Development Surveyor, Secondary School Teacher, Town Planner,
International Aid/Development Worker, Landscape Architect, Law, Geologist, Green Energy, Data Analyst.

For further information please contact Mrs S Marriot



Religious Studies: Religion Philosophy and Ethics

Humanities AOLE



The GCSE in Religious Studies supports learners to develop knowledge and understanding of religious and non-religious beliefs, values, teachings, practices and philosophical convictions. Learners will explore the big questions of life and existence from a religious and non-religious worldview.

They will study: Key beliefs and teachings, beliefs about life and death and belief in contemporary society from a Christian, Buddhist and non-religious worldview. Students will apply and debate the key beliefs and teachings studied to ethical issues such as humanities relationship to the natural world, human rights, animal rights, medical ethics, freedom of religious expression, use of personal wealth, freedom, justice and crime and punishment.

60% Exam
40% Non exam assessment

Many subjects go well with Religious Studies: for example English, History and Geography. Religious Studies can be a useful complement to Science subjects. The skills developed in Religious Studies are particularly useful for careers in Law, Education, Politics, Medicine, Administration or the Media.

For further information please contact Mrs C Davies



Leisure and Tourism

Humanities AOLE



The Tourism industry is one of the world's biggest and fastest growing industries. It provides activities for people to enjoy during their leisure time. You will learn that the industry is made up of many different organisations ranging from Theme Parks and Leisure Centres to National Parks and Cinemas. By studying Tourism you will understand the important part that it plays in today's society. It currently employs over three million people in the UK and is worth £126.9bn to the economy.

Topics covered

The course is made up of three units of study that are completed over the two years of the course. The topics covered include:

- Customer Experience
- The Business of Tourism
- Developing UK Tourist Destinations

The course is assessed through the completion of controlled assessments and an external examination. One of the controlled assessments will require a visit to a tourist attraction such as Alton Towers.

Controlled Assessment - 75%
Examination - 25%

This course provides a sound understanding of the main areas of Tourism and naturally leads on to the Advanced Travel and Tourism course within the Sixth Form. Potential career opportunities are varied due to the size and diversity of the industry. These include work within Event Management, Hospitality, Travel and many more areas.

For further information please contact Mrs K Alexander



Business Studies

Humanities AOLE



The WJEC GCSE Business qualification will develop your understanding of the activities that make a business successful. You will gain an insight into critical issues facing businesses and ways in which these can be solved. You will undertake research to make reasoned judgements and think critically about businesses in your area. You will also reflect on business activity in the context of the environment and sustainability. You will study the impact business has on society. You will explore job market trends and understand different business careers and employment opportunities available to you.

Units 1 and 3 are assessed by written examinations containing both short and extended answers, with some based around business situations. Unit 2 and 4 are non-examined assessments where you will be given an assignment brief to complete. You will undertake research, analyse the data and provide judgements.

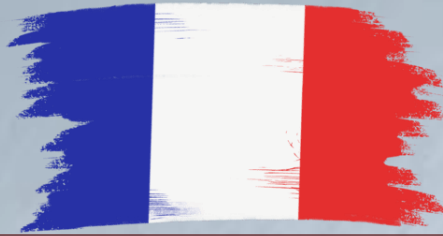
GCSE Business will prepare you for many careers in business and industry. These include in marketing and public relations, law, finance and accounting, human resource management, as well as manufacturing and production. An understanding of the principles of management is applicable to many roles in both the public and private sector and will be valuable for whatever career path you choose.

For further information please contact Mrs T Parkes



French

Languages, Literacy and communication AOLE



The GCSE French Course aims:

- To develop the ability to communicate effectively in French
- To form a sound base for further study, work and leisure opportunities
- To offer insight into French-speaking culture
- To encourage positive attitudes towards learning international languages and an appreciation of cultural differences

The GCSE Course further develops the knowledge, skills and understanding acquired in Years 7 - 9

The following themes are covered:

- Language for leisure and wellbeing
 - Language for travel
 - Language for study and work

Oracy (30%) Non Exam Assessment - conducted by class teacher and assessed by WJEC

Reading and Writing (15%) Non Exam Assessment - conducted in class and assessed
Listening Exam (20%)
Reading and Writing Exam (35%)

This is a linear qualification with no tiered entry.

For those interested in using French in the future, opportunities for further study are available through A-Level courses in Years 12/13. The ability to speak an International Language is becoming increasingly valuable in all areas of working life (Banking, Business, Law and Leisure and Tourism, particularly Post-Brexit). A lack of language skills is considered to be one of the main concerns of employers, so if you have a knowledge of French you are in a very strong position within an increasingly competitive global job market - people who can offer French are often in demand, as many organisations are looking for individuals with language skills.

For further information please contact Miss I Williams



German

Languages, Literacy and communication AOLE



The GCSE German Course aims:

- To develop the ability to communicate effectively in German
- To form a sound base for further study, work and leisure opportunities
- To offer insight into German-speaking culture
- To encourage positive attitudes towards learning international languages and an appreciation of cultural differences

The GCSE Course further develops the knowledge, skills and understanding acquired in Years 7 - 9

The following themes are covered:

- Language for leisure and wellbeing
 - Language for travel
 - Language for study and work

Oracy (30%) Non Exam Assessment - conducted by class teacher and assessed by WJEC

Reading and Writing (15%) Non Exam Assessment - conducted in class and assessed
Listening Exam (20%)
Reading and Writing Exam (35%)

This is a linear qualification with no tiered entry.

For those interested in using German in the future, opportunities for further study are available through A-Level courses in Years 12/13. The ability to speak an International Language is becoming increasingly valuable in all areas of working life (Banking, Business, Law and Leisure and Tourism, particularly Post-Brexit). A lack of language skills is considered to be one of the main concerns of employers, so if you have a knowledge of German you are in a very strong position within an increasingly competitive global job market - people who can offer German are often in demand, as many organisations are looking for individuals with language skills.

For further information please contact Mrs B Gordon



Music

Expressive Arts AOLE



Do you play an Instrument or Sing and want to improve your performance skills? Are you already approximately Grade 2-3 standard? Can you read musical notation and enjoy learning about different musical styles and genres? Then GCSE Music could be the course for you!

All students opting for this subject should be currently learning to play an instrument/sing to a good standard (approximately Grade 2-3) and will have regular opportunities to improve their solo and ensemble skills by taking part in extra-curricular activities and class performances.

Taking Music at GCSE level also gives you the opportunity to develop your own creative skills through composition work. In this part of the course you will compose and notate two pieces; one based on a brief set by the WJEC exam board, the other is a free composition which can be in a style that you choose.

65% of the course is based on practical work and the production of written Reflective Composition Log. Unit 1: Performing will require a minimum of two pieces (approximately Grade 3 standard). Unit 2: Composing, will require 2 compositions including one in response to a brief set by WJEC. The remaining 35% comes from the listening exam completed at the end of the course which requires objective responses to a range of questions covering set works and unseen extract.

A qualification in GCSE Music gives you the chance to go on to study Music or Music Technology at AS/A2 level. This can lead to future career opportunities in the field of Performing Arts, Media Studies, Music Recording, Event Management and Teaching.

For further information please contact Miss E Hammerton



Drama

Expressive Arts AOLE



GCSE Drama is a course for students who want to develop their acting and performance skills. It involves both practical and written work and aims to develop your confidence in group work and performance on stage. You must have an interest in both performance and theory of Drama as some of the course requires study of plays and written evaluations. You will be expected to perform in front of an audience regularly.

You will develop in the following areas:

Analysis and study of drama texts, practical skills, responding to stimulus, evaluation of own and others' performance, historical aspects of drama, including the study of theatre practitioners, an enjoyment of live theatre. Topics covered include: Improvisation and theatrical genres, scripted and devised performance, Theatre Practitioners, evaluation of own performance, exam on set text.

You may also be involved in Assemblies, Evening Performances and Concerts throughout the course.

Practical element 60%
Written element 40%

Unit 1 -Devising Drama- 40% - Creative log, internally assessed practical performance, written evaluation

Unit 2: Performance from a Text- 30%
Practical non-examination assessment

Unit 3: Interpreting Theatre
On-screen examination 30% - Questions requiring objective responses, short and extended answers, in response to set text and unseen texts.

Furthering Drama at A level
Actor

Arts administrator
Community arts worker
Costume designer
Digital marketer
Doctor
Drama therapist
Events manager
Image consultant
Lighting technician
... and many many more

For further information please contact Mrs S Howell



Art – Fine art pathway

Expressive Arts AOLE



The Fine Art pathway is an exciting aspect of art, craft and design where you explore ideas through personalised projects. This pathway offers a choice of traditional and digital media and processes and involves expressive use of a wide range of materials, techniques and skills, such as drawing, painting, printmaking, sculpture and digital work, taught through a range of workshop styled activities.

This qualification will support you to:

- explore the work of artists and designers to help develop your own creative talent
- develop creative skills so that you can plan, devise and design your own work
 - gain practical skills, becoming increasingly sophisticated and controlled
 - reflect on, evaluate and refine your work
 - explore diversity, identity and culture

Studying Fine Art will extend your creativity and provide a range of transferrable skills which are valuable in all aspects of life and the world of work.

Unit 1: Portfolio Non-examination assessment 60% of qualification

Unit 2: Externally Set Assignment 10 hours sustained focus, plus preparatory study Non-examination assessment 40% of qualification.

This qualification provides a suitable foundation for the study of Art and Design at A-level. It will also provide a satisfying course of study for you if you choose not to progress to study further.

The career possibilities that come through the study of art and design are vast, and include:-

Animator, Architect, Cartoonist, Cinematographer, Digital Artist, Furniture Designer, Fine Artist, Film researcher, Game Designer, Interior Designer, Make-up artist, Product Designer, Photographer, Production Designer, Sculptor, Special Effects Artist, Tattoo Artist, Teacher, Theatre Designer, TV Director, Typographer, Video artist.

For further information please contact Mrs M Millington-Cassidy



Textile design

Expressive Arts AOLE



The Textile Design pathway is a creative course that allows you to make designs and products for woven, knitted, stitched, or printed fabrics and involves an understanding of fibers, yarns, and fabrics. Textile Design encompasses a broad range of materials, techniques and processes, such as surface decoration and embroidery, crochet, knitting, felt making, sewing machine skills, fabric dyes, garment making or interior pieces.

This qualification will support you to:

- explore the work of artists and designers to help develop your own creative talent
- develop creative skills so that you can plan, devise and design your own work
 - gain practical skills, becoming increasingly sophisticated and controlled
 - reflect on, evaluate and refine your work
 - explore diversity, identity and culture

Unit 1: Portfolio Non-examination assessment 60% of qualification

Unit 2: Externally Set Assignment
10 hours sustained focus, plus preparatory study Non-examination assessment 40% of qualification.

This qualification provides a suitable foundation for the study of Art and Design at A-level. It will also provide a satisfying course of study for you if you choose not to progress to study further.

The career possibilities that come through the study of art and design are vast, and include:-
Costume Designer, Exhibition Designer, Fashion Designer, Interior Designer, Jewellery Designer, Product Designer, Teacher, Theatre Designer, Textile Designer.

For further information please contact Mrs N Kenworthy & Mrs M Millington Cassidy



Digital Technology

Science and Tech AOLE



Digital technologies are electronic tools, systems, devices and resources that generate, store or process data. It is technology that relies on the use of microprocessors; hence, computers and applications that are dependent on computers such as the Internet, as well as other devices such as video cameras, and mobile devices. Well known applications include social media, email and multimedia. The qualification will allow students to develop their understanding of the range of digital technology systems at use in our society. It will also allow students to explore the ever-evolving nature of digital technology systems and how these systems can be used productively, creatively and safely.

Topics Covered You will look at a history of digital technology, digital communications and the impact digital technology has had on society as well as more technical aspects of storage and operating systems and data protection. Spreadsheet and desktop publishing software will be used to develop solutions to a range of problems.

The Units Covered are: Unit 1 Digital World - Examination - 40%

Unit 2 Digital Practices - Non-exam assessment - 40% You will interrogate a spreadsheet to develop a website to satisfy a client's needs

Unit 3 Communicating in the Digital World - Non-exam assessment - 20%

Candidates will create digital assets related to a set context and then formulate an online digital communications campaign around them.

The course is assessed through the completion of two NEAs, and one written Examinations. The final qualification awarded is a GCSE and is graded in the following ways A*, A, B or C.

This course provides a sound understanding of the main areas of information and communication technology and naturally leads on to the Level 3 ICT course within the Sixth Form. Potential career opportunities are varied due to the fact that almost all organisations require information technology to function efficiently.

For further information please contact Mrs G Hughes or Mr A Dawson



Computer Science

Science and Tech AOLE



Computer science teaches both logical discipline and imaginative creativity in the selection and design of algorithms and the writing, testing and debugging of programs; it relies on an understanding of the rules of language at a fundamental level; it encourages an awareness of the management and organisation of computer systems; it extends learners' horizons beyond the school or college environment in the appreciation of the effects of computer science on society and individuals.

Unit 1: Understanding Computer Science

Written examination:
1 hour 45 minutes
50% of the qualification
100 marks

Unit 2: Computational Thinking and Programming

On-screen examination: 2 hours 30% of the qualification
60 marks

Unit 3: Software Development Non-exam assessment: 20 hours 20% of qualification
80 marks.

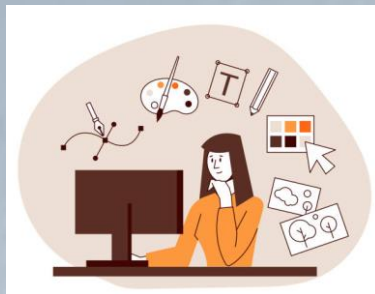
Computers are widely used in all aspects of business, industry, government, education, leisure and the home. In this increasingly technological age, a study of computer science, and particularly how computers are used in the solution of a variety of problems, is not only valuable to the learners themselves but also essential to the future wellbeing of the country.

For further information please contact Mr D Jones



GCSE Art and Design – Graphic Communication

Science and Tech AOLE



The Graphic Communication pathway allows you to create visual work to convey information, ideas and emotions using graphic elements to a target audience. It can involve illustration, photography, calligraphy, web design, advertising, packaging, and multimedia and animation design. This offers a choice of using traditional skills alongside digital design. You will have the opportunity to create work in a range of areas from posters to CD covers, T Shirts to display stands and even magazines.

This qualification will support you to:

- explore the work of artists and designers to help develop your own creative talent
- develop creative skills so that you can plan, devise and design your own work
- gain practical skills, becoming increasingly sophisticated and controlled
- reflect on, evaluate and refine your work
- explore diversity, identity and culture.

Unit 1: Portfolio Non-examination assessment 60% of qualification

Unit 2: Externally Set Assignment
10 hours sustained focus, plus preparatory study
Non-examination assessment 40% of qualification.

This qualification provides a suitable foundation for the study of Art and Design at A-level. It will also provide a satisfying course of study for you if you choose not to progress to study further.

The career possibilities that come through the study of art and design are vast, and include:-
Advertising, Animator, Book Designer, Cartoonist, Digital Artist, Exhibition Designer, Graphic Artist, Game Designer, Illustrator and many more.

For further information please contact Mrs H Moore & Mrs M Millington-Cassidy



Product Design

Science and Tech AOLE



Product Design is everywhere. We all use & desire products; they make our lives easier, safer and more fun. On this new course you will:

- * Design products from concept to final production.
 - * Consider and investigate the market you are targeting
 - * Research, design and make products such as lights, MP3 player docking stations, children's toys & jewellery.
 - * Learn about the materials you can use and how they can be shaped.
 - * Analyse a variety of products, looking at how they are designed, trying to guess what the designer was thinking and what innovative features make the product stand out.
 - * Learn valuable project & time management skills.
- The major project in Year 11 will account for 50% of your final work.

Project 50% Exam 50%

This course is an excellent foundation for those pupils who wish to pursue either an A Level or an AS Level in Design and Technology; Product Design.

This forms a strong foundation for those who wish to follow a career in either technical or creative professions such as the Building Industry, Engineering, Mechanics, Architecture, Product Design as well as Graphic Design or Stage/ Television/Theatre Design.

For further information please contact Mrs B Owen, Mrs H Moore or Mrs M. Millington-Cassidy



Physical Education (PE)

Health and Wellbeing AOLE



You should only consider GCSE PE if your participation in your PE practical lessons is very good and you have a genuine interest in sport and physical activity. You should also be attending extra-curricular sports clubs, either with school or a local club. Key features include one full course specification with 3 practical activities assessed:- (one team game, 1 individual activity and an additional one of either of these). Emphasis is placed on both practical skills and theoretical components. Theoretical focus on:- health, training and exercise; exercise physiology; movement analysis; psychology of sport and physical activity & socio-cultural issues in sport and physical activity. Candidates will also design and undertake an 8 week personal fitness programme for their chosen major activity. Candidates will be required to offer 3 activities from a wide range of practical activities included in the course. You can also use some activities you do outside school e.g. skiing, kayaking or horse riding.

The course is 50% Practical and 50% Theory. There is an examination.
Written Paper - 50% 2 hours - 30 minute audio-visual paper, 90 minutes written paper.
Practical activities - 50% (Practical 42%/Personal Fitness Programme 8%).

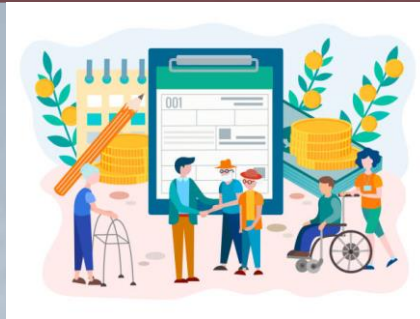
Leisure Industry, Sports Science,
Teaching, Physiotherapy.
BTEC Diploma in Sports Studies
GNVQ Leisure
OCR Cambridge Technical

For further information please contact Mr N Wilkinson



Health and Social Care

Health and Wellbeing AOLE



The specification is designed to give you an opportunity to extend and apply your understanding and skills related to the development and care of individuals through life from conception and infancy to later adulthood. It is aimed at students who wish to work in the caring profession or care for children and want to take their interest further.

This course promotes an understanding of the social, emotional, physical and intellectual development of children linked through the study of the family and community. The course looks at public health and health promotion as well as factors affecting health and well-being across the life cycle. It will offer opportunities for students to develop an understanding of citizenship and understanding of human needs with society. The Core Modules are: Human growth, development and well-being, Promoting and maintaining health and well-being, Health and social care in the 21st century, Promoting and supporting health and well-being to achieve positive outcomes.

Exam 40 % Non-Exam Assessments
60% There are two NEA's investigating:

- Health and social care, and childcare provision in Wales to promote and support health and well-being
- Public health and health promotion across the life cycle
- Factors affecting health and well-being across the life cycle.

You will develop the following transferable skills: Analysis; Practical skills; Observational skills; Research skills.

These will help you to pursue a career within the Care Industry or the profession of Education. This course is also an excellent foundation if you were to consider Health and Social Care as a 6th form choice at Ysgol Eirias.

For further information please contact Mrs N Kenworthy



Food and nutrition

Health and Wellbeing AOLE



This Food and Nutrition course will equip you with the knowledge, understanding and skills required to cook and apply the principles of food science, nutrition and healthy eating. It will encourage you to cook a range of dishes and enable you to make informed decisions about food and nutrition. The topics taught will enable you to make connections between food and nutrition theory and practice and relate to the study of food science.

Unit 1: Principles of Food and Nutrition Digital examination: 1 hour 30 minutes 40% of qualification

Unit 2: Food Investigation Non-examination assessment: 8 hours 20% of qualification

Unit 3: Food and Nutrition in Action Non-examination assessment: 12 hours 40% of qualification.

This qualification builds on previous knowledge and will provide a suitable foundation for the study of Food Science and Nutrition at Level 3.

For further information please contact Mrs A Donohue & Mrs M Millington Cassidy



The core subjects

English GCSE

The GCSE English Language and Literature Double Award enables you to appreciate how language connects you to the world around you, to engage with a rich range of texts from different periods and by diverse writers, and to develop and apply your own use of language, through written and verbal communication.

Units 1, 4b and 6 are examined units, together worth 60% of your qualification. Each exam lasts 90 minutes and will consist of low-tariff extract-based questions, an extended essay response and a piece of creative fiction or non-fiction writing. Units 2, 3 and 5 are non-examined assessments, together worth 40% of your qualification. Each unit will consist of two tasks, one that will assess your written response to the relevant text(s) and one that will assess your oracy skills.

Maths GCSE

In GCSE Mathematics and Numeracy, you will build on the knowledge and understanding you have of topics within number, algebra, geometry, and data. You will be taught the key financial aspects of everyday adult life, such as dealing with payslips, bills, and savings. A good understanding of the content of this qualification is the perfect platform to those hoping to follow a STEM career. The course consists of 3 units.

HOW WILL I BE ASSESSED?

UNIT 1: Financial Mathematics and Other Applications of Numeracy

Higher tier	Foundation tier
1 hour 45 minutes 80 marks	1 hour 30 minutes 65 marks
Weighting: 30% of the qualification	

UNIT 2: Non-calculator

Higher tier	Foundation tier
1 hour 45 minutes 80 marks	1 hour 30 minutes 65 marks
Weighting: 30% of the qualification	

UNIT 3: Calculator-allowed

Higher tier	Foundation tier
2 hours 90 marks	1 hour 45 minutes 75 marks
Weighting: 40% of the qualification	

GCSE Science Double Award

This WJEC GCSE Science Double Award course provides a broad, coherent, course of study that encourages learners to develop confidence in, and a positive attitude towards, science and to recognise its importance in their own lives and to society. Studying GCSE Science Double Award provides the foundations for understanding the material world. Scientific understanding is changing our lives and is vital to the world's future prosperity, and all learners should be taught essential aspects of the knowledge, methods, processes and uses of science. They should be helped to appreciate how the complex and diverse phenomena of the natural world can be described in terms of a small number of key ideas relating to the sciences which are both inter-linked, and are of universal application.

GCSE Core Cymraeg

You will study three broad themes of 'cynefin', identity and culture. You will learn:

- about the value of the Welsh language socially and in the world of work.
- about its use in Wales and around the world.
- how to understand and use Cymraeg with others in a spontaneous and confident way.
- how to develop skills for life.
- how to respond creatively to literature.

There are two written exams and two speaking assessments, each worth 25% of the overall grade

Jobs advertised in Wales often require the ability to speak Welsh as essential or desirable. If you have a GCSE Core Cymraeg qualification and if the other candidates applying for the post do not have this qualification, you have a head start.



Skills Challenge

The Skill Challenge Certificate (SCC) has 4 elements to this qualification.
Each element of the SCC is completed in a variety of subject areas.

The Global Challenge is taught in RS about the raising awareness about extremism
(25% coursework)

The Community Challenge is completed in PE lessons in response to litter and the
environment (25% coursework)

The Enterprise Challenge is taught in Y10 skills lessons teach about being aware and
ready for the work place (25% coursework)

The pupils best 2 challenges are then selected to be contributed to the overall grade.
Y11 - Individual Project (IP) is taught in Y11 Skills lessons. (50% coursework)

We hope this booklet has been a useful aid to choosing your options and that you feel well informed about your choices. There will be opportunities to talk to subject teachers at the 6th Form information evening, or you can speak to the named teachers on each page. Alternatively you can also seek help and support from your head of year.

Further support:

Pupils can access the Careers Wales website using their account, which they have set up. They can use the links below for some helpful research into your options choices: [Year 8 and 9 subject options | Careers Wales \(gov.wales\)](#)

There are also the following links to help and support them: Career Matching Quiz - [Career Match Quiz \(gov.wales\)](#) will help them see which careers they could enjoy.

The Buzz Quiz - [Buzz Quiz \(gov.wales\)](#) this is a fun personality test.

A-Z of Careers - [Job Information \(gov.wales\)](#)- general information on jobs, trends & skills etc.

